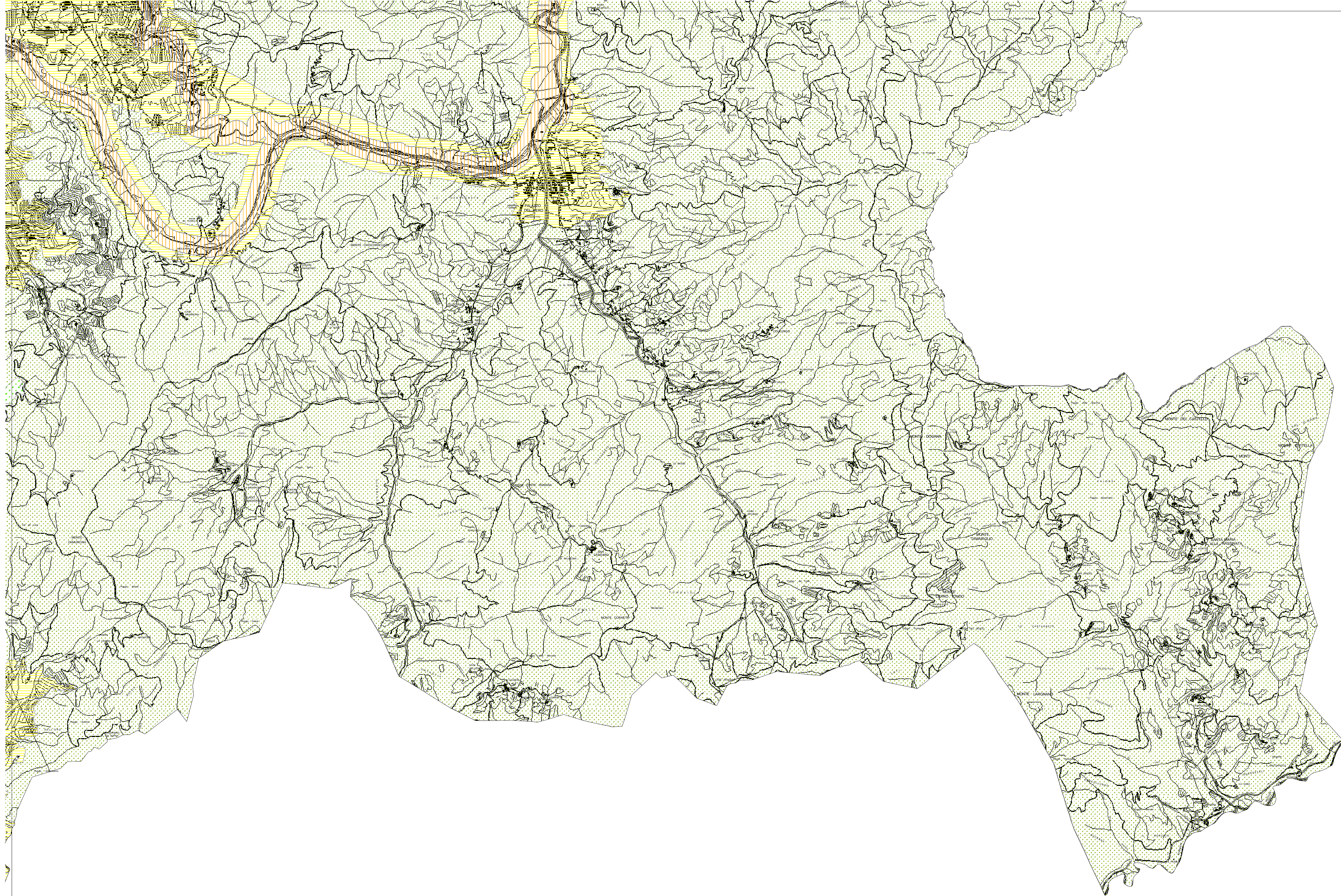
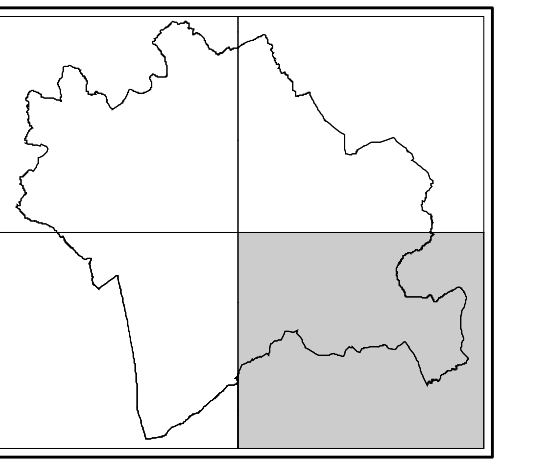
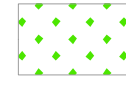

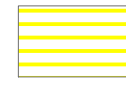

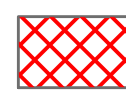
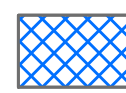



**PIANO COMUNALE DI
CLASSIFICAZIONE ACUSTICA**
scala 1:15.000



LEGENDA

-  **CLASSE I**
Aree particolarmente protette
-  **CLASSE II**
Aree destinate ad uso prevalentemente residenziale
-  **CLASSE III**
Aree di quartiere
-  **CLASSE IV**
Aree di intensa affollamento umano
-  **CLASSE V**
Aree prevalentemente industriali
-  **CLASSE VI**
Aree esclusivamente industriali
-  Aree destinate a parcheggio o cantiera temporanea; ovvero mobile, ovvero di spazio