

REFERENDUM POPOLARE DEL 12/13 GIUGNO 2005

Sezione	Ubicazione	Elettori Iscritti		
		Maschi	Femmine	Totale
1	EX SCUOLA MATERNA - VIA PELLICCERIA, N.23	407	480	887
2	EX SCUOLA MATERNA - VIA PELLICCERIA, N.23	243	267	510
3	PALAZZO COMUNALE - VIA MONTETINI, N.10	132	166	298
4	SCUOLA ELEMENTARE "PIO BORRI" - VIA SANSOVINO,1	293	368	661
5	SCUOLA ELEMENTARE "PIO BORRI" - VIA SANSOVINO,1	297	350	647
6	SCUOLA ELEMENTARE GAMURRINI - VIA PORTA BUIA, 4	349	450	799
7	SCUOLA ELEMENTARE GAMURRINI - VIA PORTA BUIA, 4	288	351	639
8	SCUOLA ELEMENTARE GAMURRINI - VIA PORTA BUIA, 4	358	435	793
9	I.T.I.S. - VIA F.LIPPI	392	527	919
10	SCUOLA ELEMENTARE MASACCIO - VIA MASACCIO, 6	330	412	742
11	SCUOLA ELEMENTARE MASACCIO - VIA MASACCIO, 6	463	530	993
12	SCUOLA ELEMENTARE MASACCIO - VIA MASACCIO, 6	424	495	919
13	SCUOLA ELEMENTARE MASACCIO - VIA MASACCIO, 6	336	458	794
14	SCUOLA ELEMENTARE MONTE BIANCO - VIA MONTE CERVINO, 3	509	588	1097
15	SCUOLA ELEMENTARE MONTE BIANCO - VIA MONTE CERVINO, 3	445	485	930
16	SCUOLA ELEMENTARE DELL'ORCIOLAIA - VIA FIORENTINA, 177	262	302	564
17	SCUOLA ELEMENTARE DELL'ORCIOLAIA - VIA FIORENTINA, 177	225	228	453
18	SCUOLA ELEMENTARE DELL'ORCIOLAIA - VIA FIORENTINA, 177	498	581	1079
19	SCUOLA ELEMENTARE DELL'ORCIOLAIA - VIA FIORENTINA, 177	479	538	1017
20	SCUOLA MEDIA G. VASARI - VIA EMILIA, 10	305	371	676
21	SCUOLA MEDIA G. VASARI - VIA EMILIA, 10	431	454	885
22	SCUOLA MEDIA G. VASARI - VIA EMILIA, 10	290	390	680
23	SCUOLA ELEMENTARE L. BRUNI - VIA P.L. DA PALESTRINA, 19	432	489	921
24	SCUOLA ELEMENTARE PIO BORRI - VIA A.SANSOVINO, 1	410	462	872
25	SCUOLA ELEMENTARE PIO BORRI - VIA A.SANSOVINO, 1	457	592	1049
26	SCUOLA ELEMENTARE PIO BORRI - VIA A.SANSOVINO, 1	407	522	929
27	SCUOLA ELEMENTARE F. SEVERI - VIA G.COCCI, 40	348	367	715
28	SCUOLA ELEMENTARE F. SEVERI - VIA G.COCCI, 40	224	236	460
29	SCUOLA ELEMENTARE F. SEVERI - VIA G.COCCI, 40	465	560	1025
30	SCUOLA ELEMENTARE POSITANO - VIA G.SEVERI, 171	410	394	804
31	SCUOLA ELEMENTARE POSITANO - VIA G.SEVERI, 171	419	444	863

32	SCUOLA ELEMENTARE A. MORO - VIA A. TRICCA, 19	428	493	921
33	SCUOLA ELEMENTARE A. MORO - VIA A. TRICCA, 19	405	504	909
34	SCUOLA ELEMENTARE A. MORO - VIA A. TRICCA, 19	407	501	908
35	SCUOLA ELEMENTARE A. MORO - VIA A. TRICCA, 19	405	496	901
36	SCUOLA ELEMENTARE A. MORO - VIA A. TRICCA, 19	399	461	860
37	SCUOLA ELEMENTARE A. MORO - VIA A. TRICCA, 19	502	597	1099
38	SCUOLA ELEMENTARE SANTE TANI - VIA GENERALE DA BORMIDA, 9	502	610	1112
39	SCUOLA ELEMENTARE SANTE TANI - VIA GENERALE DA BORMIDA, 9	414	536	950
40	SCUOLA ELEMENTARE SANTE TANI - VIA GENERALE DA BORMIDA, 9	335	437	772
41	SCUOLA ELEMENTARE SANTE TANI - VIA GENERALE DA BORMIDA, 9	412	484	896
42	SCUOLA ELEMENTARE SANTE TANI - VIA GENERALE DA BORMIDA, 9	403	484	887
43	SCUOLA ELEMENTARE SANTE TANI - VIA GENERALE DA BORMIDA, 9	387	466	853
44	SCUOLA ELEMENTARE A. CURINA - VIA V. ALFIERI, 22	525	561	1086
45	SCUOLA ELEMENTARE A. CURINA - VIA V. ALFIERI, 22	449	519	968
46	SCUOLA ELEMENTARE A. CURINA - VIA V. ALFIERI, 22	418	477	895
47	SCUOLA ELEMENTARE A. CURINA - VIA V. ALFIERI, 22	457	522	979
48	SCUOLA ELEMENTARE A. CURINA - VIA V. ALFIERI, 22	450	449	899
49	SCUOLA ELEMENTARE A. CURINA - VIA V. ALFIERI, 22	452	499	951
50	SCUOLA ELEMENTARE - VIA B. CROCE, 64	375	403	778
51	SCUOLA ELEMENTARE - VIA B. CROCE, 64	426	445	871
52	SCUOLA ELEMENTARE - VIA B. CROCE, 64	402	435	837
53	SCUOLA ELEMENTARE - VIA B. CROCE, 64	441	467	908
54	SCUOLA ELEMENTARE - VIA B. CROCE, 64	646	625	1271
55	COMUNITA' PROTETTA - SAN PAOLO DANEI - LOC. AGAZZI, 1	333	362	695
56	SCUOLA ELEMENTARE COL. BETTINI - VIA V. BELLINI, 47	381	433	814
57	SCUOLA ELEMENTARE COL. BETTINI - VIA V. BELLINI, 47	465	510	975
58	SCUOLA ELEMENTARE - LOC. PRATANTICO, 6/A	432	407	839
59	SCUOLA ELEMENTARE ANNA FRANK - LOC. INDICATORE ZONA F, 60	459	486	945
60	SCUOLA ELEMENTARE ANNA FRANK - LOC. INDICATORE ZONA F, 60	443	466	909
61	SCUOLA ELEMENTARE - LOC. S. GIULIANO, 106	406	428	834
62	SCUOLA ELEMENTARE - LOC. BATTIFOLLE, 33	478	511	989
63	SCUOLA ELEMENTARE - LOC. QUARATA, 248	551	583	1134
64	SCUOLA ELEMENTARE - LOC. QUARATA, 248	313	317	630
65	EX SCUOLA ELEMENTARE - PONTE BURIANO N. 63/E	243	239	482
66	SCUOLA ELEMENTARE - LOC. GIOVI, 168	266	284	550
67	SCUOLA ELEMENTARE - LOC. GIOVI, 168	488	523	1011

68	SCUOLA ELEMENTARE - LOC. CECILIANO, 53	380	390	770
69	SCUOLA ELEMENTARE - LOC. CECILIANO, 53	461	496	957
70	SCUOLA ELEMENTARE - LOC. CHIASSA SUPERIORE, 39/A	383	364	747
71	SCUOLA MATERNA - LOC. TREGOZZANO, 62/A	609	640	1249
72	SCUOLA MATERNA - LOC. ANTRIA, 44/D	579	583	1162
73	SCUOLA ELEMENTARE - LOC. BAGNORO, 1	544	571	1115
74	SCUOLA ELEMENTARE - LOC. S.FIRMINA, 112/F	251	291	542
75	SCUOLA ELEMENTARE - LOC. S.FIRMINA, 112/F	495	507	1002
76	SCUOLA ELEMENTARE - LOC. OLMO, 169	501	508	1009
77	SCUOLA ELEMENTARE - LOC. OLMO, 169	454	495	949
78	EX SCUOLA ELEMENTARE - LOC. IL MATTO, 10	258	259	517
79	SCUOLA ELEMENTARE - LOC. PULICIANO, 73/A	500	536	1036
80	SCUOLA MEDIA - LOC. RIGUTINO RIO GROSSO	547	590	1137
81	SCUOLA MEDIA - LOC. RIGUTINO RIO GROSSO	365	377	742
82	CENTRO DI AGGREGAZIONE SOCIALE - LOC. FRASSINETO, 62/R	353	333	686
83	SCUOLA ELEMENTARE - LOC. VITIANO, 58	332	347	679
84	SCUOLA ELEMENTARE - LOC. PALAZZO DEL PERO, 18	412	410	822
85	AMBULATORIO - LOC. S.MARIA ALLA RASSINATA,1	56	51	107
86	EX SCUOLA ELEMENTARE - LOC. MOLIN NUOVO, 2/B	65	67	132
87	SCUOLA ELEMENTARE COL. BETTINI - VIA BELLINI, 47	387	431	818
88	SCUOLA ELEMENTARE - LOC. SAN GIULIANO, 106	354	403	757
89	SCUOLA ELEMENTARE PIO BORRI - VIA SANSOVINO, 1	305	324	629
90	SCUOLA ELEMENTARE F. SEVERI - VIA G. COCCHI, 40	359	384	743
91	EX SCUOLA ELEMENTARE - LOC. IL MATTO, 10	380	395	775
92	ENTE OSPEDALIERE SAN DONATO - VIA PIETRO NENNI, 20	0	0	0
93	ENTE OSPEDALIERO SAN DONATO - VIA A. DE GASPERI	0	0	0
	<i>Totali Elettori Iscritti</i>	35956	40064	76020

REFERENDUM POPOLARE
LIMITE ALLA RICERCA CLINICA E SPERIMENTALE SUGLI EMBRIONI
RIASSUNTO FINALE

Elettori aventi diritto al voto:

MASCHI:	35956	FEMMINE:	40064	TOTALE:	76020
----------------	--------------	-----------------	--------------	----------------	--------------

Votanti:

MASCHI:	11594	FEMMINE:	12581	TOTALE:	24175
----------------	--------------	-----------------	--------------	----------------	--------------

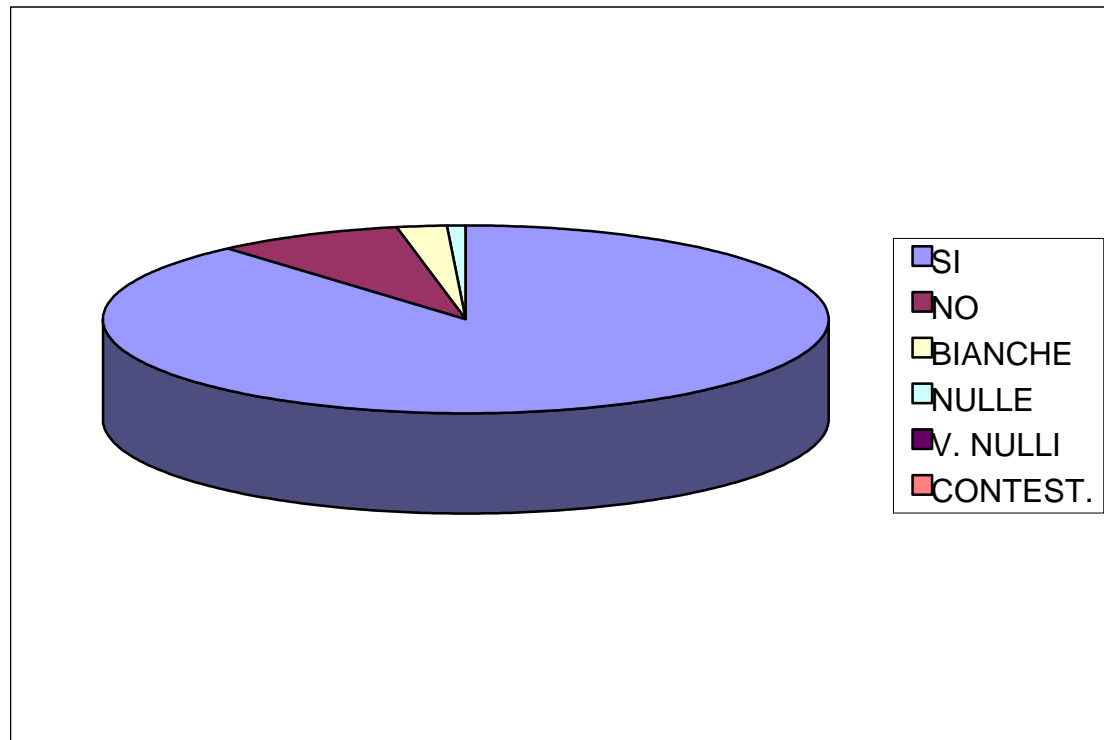
Voti Espresi:

SI	21411	NO	2001
-----------	--------------	-----------	-------------

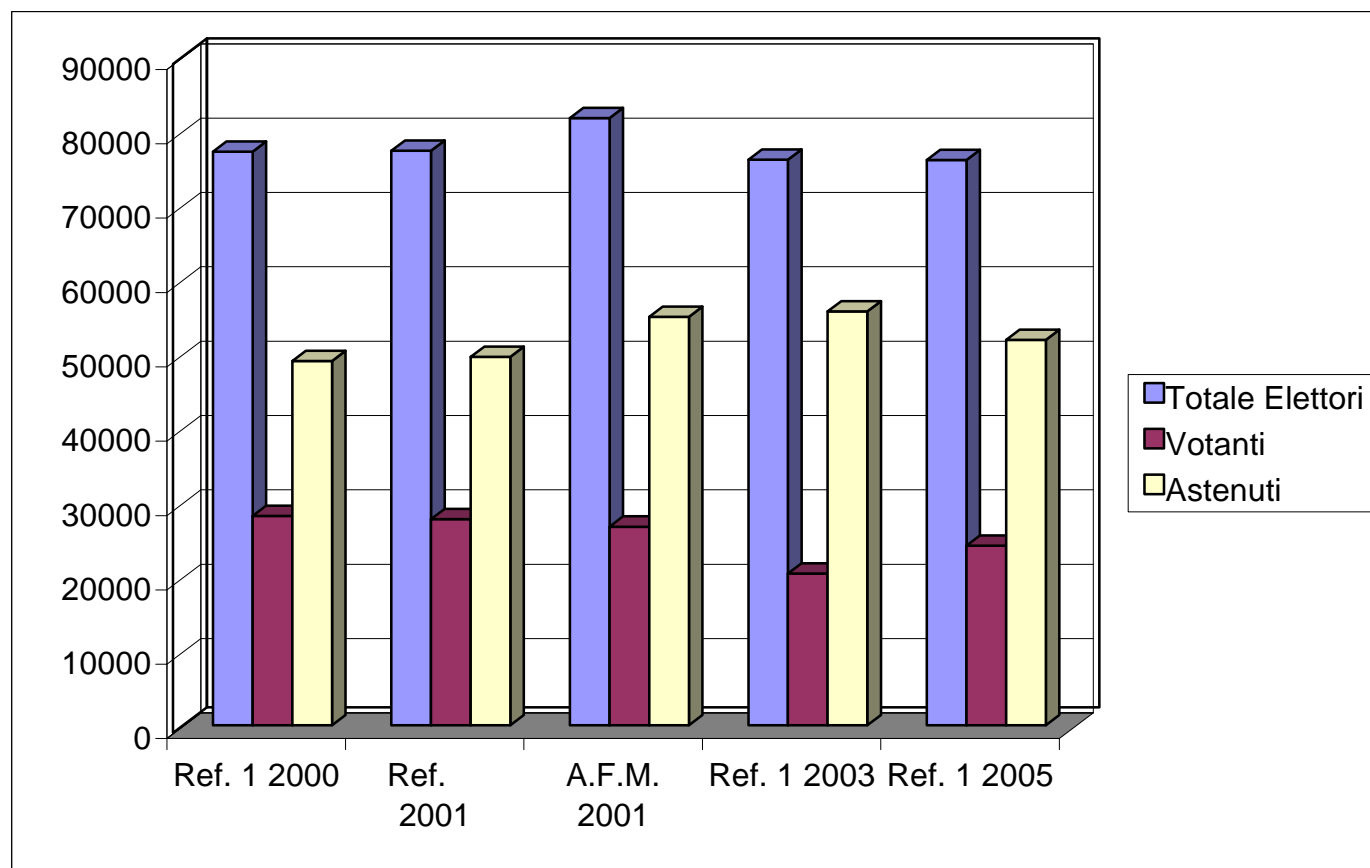
BIANCHE	565	NULLE	198	V. NULLE	0	CONTEST.	0
----------------	------------	--------------	------------	-----------------	----------	-----------------	----------

**REFERENDUM POPOLARE
LIMITE ALLA RICERCA CLINICA E SPERIMENTALE SUGLI EMBRIONI**

SI	21411
NO	2001
BIANCHE	565
NULLE	198
V. NULLI	0
CONTEST.	0



REFERENDUM POPOLARE
LIMITE ALLA RICERCA CLINICA E SPERIMENTALE SUGLI EMBRIONI
TOTALE ELETTORI CHE HANNO DIRITTO AL VOTO, VOTANTI E ASTENUTI AI REFERENDUM DAL 1999 AL 2005



REFERENDUM POPOLARE

LIMITE ALLA RICERCA CLINICA E SPERIMENTALE SUGLI EMBRIONI - RISULTATO FINALE PER SEZIONE

Sez.	Elettori Iscritti			Votanti			Voti Validi			Voti Nulli			
	Maschi	Femmine	Totale	Maschi	Femmine	Totale	SI	NO	Nulle	Bianche	Contest.	V. Nulli	
1	407	480	887	147	161	308	274	24	4	6	0	0	
2	243	267	510	80	90	170	154	10	2	4	0	0	
3	132	166	298	42	44	86	77	6	0	3	0	0	
4	293	368	661	102	122	224	216	6	1	1	0	0	
5	297	350	647	68	86	154	138	14	0	2	0	0	
6	349	450	799	135	153	288	262	18	4	4	0	0	
7	288	351	639	119	115	234	200	21	3	10	0	0	
8	358	435	793	120	141	261	230	22	3	6	0	0	
9	392	527	919	130	132	262	243	15	0	4	0	0	
10	330	412	742	121	139	260	226	25	4	5	0	0	
11	463	530	993	176	193	369	336	25	0	8	0	0	
12	424	495	919	149	156	305	275	23	1	6	0	0	
13	336	458	794	111	143	254	215	27	3	9	0	0	
14	509	588	1097	175	203	378	353	16	4	5	0	0	
15	445	485	930	166	172	338	290	37	4	7	0	0	
16	262	302	564	87	96	183	164	14	2	3	0	0	
17	225	228	453	81	86	167	149	9	2	7	0	0	
18	498	581	1079	171	197	368	325	30	3	10	0	0	
19	479	538	1017	149	170	319	290	20	3	6	0	0	
20	305	371	676	108	111	219	180	26	4	9	0	0	
21	431	454	885	163	161	324	291	24	0	9	0	0	
22	290	390	680	74	99	173	158	11	1	3	0	0	
23	432	489	921	133	136	269	238	25	0	6	0	0	
24	410	462	872	142	152	294	265	19	2	8	0	0	
25	457	592	1049	154	202	356	326	22	1	7	0	0	
26	407	522	929	107	136	243	211	25	3	4	0	0	
27	348	367	715	126	106	232	213	14	2	3	0	0	
28	224	236	460	55	55	110	99	9	0	2	0	0	
29	465	560	1025	173	224	397	354	28	4	11	0	0	
30	410	394	804	119	122	241	213	21	2	5	0	0	
31	419	444	863	146	170	316	279	27	1	9	0	0	

Sez.	Elettori Iscritti			Votanti			Voti Validi		Voti Nulli			
	Maschi	Femmine	Totale	Maschi	Femmine	Totale	SI	NO	Nulle	Bianche	Contest.	V. Nulli
32	428	493	921	140	150	290	258	19	1	12	0	0
33	405	504	909	128	142	270	241	23	0	6	0	0
34	407	501	908	131	174	305	273	20	2	10	0	0
35	405	496	901	114	124	238	209	24	1	4	0	0
36	399	461	860	110	142	252	225	18	2	7	0	0
37	502	597	1099	160	178	338	301	31	2	4	0	0
38	502	610	1112	195	204	399	358	31	2	8	0	0
39	414	536	950	119	136	255	215	28	3	9	0	0
40	335	437	772	94	115	209	190	14	2	3	0	0
41	412	484	896	145	152	297	271	17	2	7	0	0
42	403	484	887	133	152	285	244	32	2	7	0	0
43	387	466	853	149	159	308	268	28	3	9	0	0
44	525	561	1086	168	173	341	306	29	2	4	0	0
45	449	519	968	129	132	261	226	25	2	8	0	0
46	418	477	895	139	165	304	278	19	0	7	0	0
47	457	522	979	148	176	324	279	32	5	8	0	0
48	450	449	899	182	159	341	304	27	2	8	0	0
49	452	499	951	191	190	381	333	36	2	10	0	0
50	375	403	778	123	131	254	232	20	1	1	0	0
51	426	445	871	118	115	233	199	26	1	7	0	0
52	402	435	837	142	158	300	280	14	2	4	0	0
53	441	467	908	122	132	254	216	30	2	6	0	0
54	646	625	1271	220	205	425	371	33	3	18	0	0
55	333	362	695	108	88	196	168	20	3	5	0	0
56	381	433	814	123	149	272	243	20	2	7	0	0
57	465	510	975	123	145	268	247	15	1	5	0	0
58	432	407	839	155	153	308	272	23	4	9	0	0
59	459	486	945	146	145	291	268	13	3	7	0	0
60	443	466	909	143	162	305	262	28	3	12	0	0
61	406	428	834	109	124	233	203	21	2	7	0	0
62	478	511	989	151	171	322	282	31	3	6	0	0
63	551	583	1134	145	180	325	271	40	4	10	0	0
64	313	317	630	96	86	182	157	17	2	6	0	0
65	243	239	482	62	51	113	90	16	1	6	0	0

Sez.	Elettori Iscritti			Votanti			Voti Validi		Voti Nulli			
	Maschi	Femmine	Totale	Maschi	Femmine	Totale	SI	NO	Nulle	Bianche	Contest.	V. Nulli
66	266	284	550	72	66	138	127	9	2	0	0	0
67	488	523	1011	165	187	352	304	38	2	8	0	0
68	380	390	770	105	111	216	191	20	1	4	0	0
69	461	496	957	158	181	339	304	24	1	10	0	0
70	383	364	747	131	138	269	242	17	8	2	0	0
71	609	640	1249	202	223	425	388	22	6	9	0	0
72	579	583	1162	164	190	354	310	33	3	8	0	0
73	544	571	1115	153	181	334	292	38	2	2	0	0
74	251	291	542	75	85	160	140	17	0	3	0	0
75	495	507	1002	159	176	335	300	25	4	6	0	0
76	501	508	1009	178	171	349	308	29	3	9	0	0
77	454	495	949	130	138	268	245	18	1	4	0	0
78	258	259	517	74	72	146	131	14	0	1	0	0
79	500	536	1036	144	134	278	220	39	5	14	0	0
80	547	590	1137	162	169	331	290	30	2	9	0	0
81	365	377	742	113	116	229	190	27	8	4	0	0
82	353	333	686	106	96	202	170	28	1	3	0	0
83	332	347	679	69	62	131	110	16	0	5	0	0
84	412	410	822	117	117	234	205	22	4	3	0	0
85	56	51	107	5	4	9	8	1	0	0	0	0
86	65	67	132	15	8	23	23	0	0	0	0	0
87	387	431	818	140	153	293	265	22	3	3	0	0
88	354	403	757	124	132	256	220	26	1	9	0	0
89	305	324	629	97	105	202	169	25	3	5	0	0
90	359	384	743	117	134	251	234	10	1	6	0	0
91	380	395	775	105	123	228	208	13	1	6	0	0
92	0	0	0	19	14	33	25	4	1	3	0	0
93	0	0	0	5	4	9	8	1	0	0	0	0
Totale	35956	40064	76020	11594	12581	24175	21411	2001	198	565	0	0
						31,80%	91,45%	8,55%				

REFERENDUM POPOLARE

LIMITE ALLA RICERCA CLINICA E SPERIMENTALE SUGLI EMBRIONI - % VOTANTI PER SEZIONE

Sez.	Elettori Iscritti			Votanti			% Votanti			% Astensionismo		
	Maschi	Femmine	Totale	Maschi	Femmine	Totale	Maschi	Femmine	Totale	Maschi	Femmine	Totale
1	407	480	887	147	161	308	36,12%	33,54%	34,72%	63,88%	66,46%	65,28%
2	243	267	510	80	90	170	32,92%	33,71%	33,33%	67,08%	66,29%	66,67%
3	132	166	298	42	44	86	31,82%	26,51%	28,86%	68,18%	73,49%	71,14%
4	293	368	661	102	122	224	34,81%	33,15%	33,89%	65,19%	66,85%	66,11%
5	297	350	647	68	86	154	22,90%	24,57%	23,80%	77,10%	75,43%	76,20%
6	349	450	799	135	153	288	38,68%	34,00%	36,05%	61,32%	66,00%	63,95%
7	288	351	639	119	115	234	41,32%	32,76%	36,62%	58,68%	67,24%	63,38%
8	358	435	793	120	141	261	33,52%	32,41%	32,91%	66,48%	67,59%	67,09%
9	392	527	919	130	132	262	33,16%	25,05%	28,51%	66,84%	74,95%	71,49%
10	330	412	742	121	139	260	36,67%	33,74%	35,04%	63,33%	66,26%	64,96%
11	463	530	993	176	193	369	38,01%	36,42%	37,16%	61,99%	63,58%	62,84%
12	424	495	919	149	156	305	35,14%	31,52%	33,19%	64,86%	68,48%	66,81%
13	336	458	794	111	143	254	33,04%	31,22%	31,99%	66,96%	68,78%	68,01%
14	509	588	1097	175	203	378	34,38%	34,52%	34,46%	65,62%	65,48%	65,54%
15	445	485	930	166	172	338	37,30%	35,46%	36,34%	62,70%	64,54%	63,66%
16	262	302	564	87	96	183	33,21%	31,79%	32,45%	66,79%	68,21%	67,55%
17	225	228	453	81	86	167	36,00%	37,72%	36,87%	64,00%	62,28%	63,13%
18	498	581	1079	171	197	368	34,34%	33,91%	34,11%	65,66%	66,09%	65,89%
19	479	538	1017	149	170	319	31,11%	31,60%	31,37%	68,89%	68,40%	68,63%
20	305	371	676	108	111	219	35,41%	29,92%	32,40%	64,59%	70,08%	67,60%
21	431	454	885	163	161	324	37,82%	35,46%	36,61%	62,18%	64,54%	63,39%
22	290	390	680	74	99	173	25,52%	25,38%	25,44%	74,48%	74,62%	74,56%
23	432	489	921	133	136	269	30,79%	27,81%	29,21%	69,21%	72,19%	70,79%
24	410	462	872	142	152	294	34,63%	32,90%	33,72%	65,37%	67,10%	66,28%
25	457	592	1049	154	202	356	33,70%	34,12%	33,94%	66,30%	65,88%	66,06%
26	407	522	929	107	136	243	26,29%	26,05%	26,16%	73,71%	73,95%	73,84%
27	348	367	715	126	106	232	36,21%	28,88%	32,45%	63,79%	71,12%	67,55%
28	224	236	460	55	55	110	24,55%	23,31%	23,91%	75,45%	76,69%	76,09%
29	465	560	1025	173	224	397	37,20%	40,00%	38,73%	62,80%	60,00%	61,27%
30	410	394	804	119	122	241	29,02%	30,96%	29,98%	70,98%	69,04%	70,02%
31	419	444	863	146	170	316	34,84%	38,29%	36,62%	65,16%	61,71%	63,38%

Sez.	Elettori Iscritti			Votanti			% Votanti			% Astensionismo		
	Maschi	Femmine	Totale	Maschi	Femmine	Totale	Maschi	Femmine	Totale	Maschi	Femmine	Totale
32	428	493	921	140	150	290	32,71%	30,43%	31,49%	67,29%	69,57%	68,51%
33	405	504	909	128	142	270	31,60%	28,17%	29,70%	68,40%	71,83%	70,30%
34	407	501	908	131	174	305	32,19%	34,73%	33,59%	67,81%	65,27%	66,41%
35	405	496	901	114	124	238	28,15%	25,00%	26,42%	71,85%	75,00%	73,58%
36	399	461	860	110	142	252	27,57%	30,80%	29,30%	72,43%	69,20%	70,70%
37	502	597	1099	160	178	338	31,87%	29,82%	30,76%	68,13%	70,18%	69,24%
38	502	610	1112	195	204	399	38,84%	33,44%	35,88%	61,16%	66,56%	64,12%
39	414	536	950	119	136	255	28,74%	25,37%	26,84%	71,26%	74,63%	73,16%
40	335	437	772	94	115	209	28,06%	26,32%	27,07%	71,94%	73,68%	72,93%
41	412	484	896	145	152	297	35,19%	31,40%	33,15%	64,81%	68,60%	66,85%
42	403	484	887	133	152	285	33,00%	31,40%	32,13%	67,00%	68,60%	67,87%
43	387	466	853	149	159	308	38,50%	34,12%	36,11%	61,50%	65,88%	63,89%
44	525	561	1086	168	173	341	32,00%	30,84%	31,40%	68,00%	69,16%	68,60%
45	449	519	968	129	132	261	28,73%	25,43%	26,96%	71,27%	74,57%	73,04%
46	418	477	895	139	165	304	33,25%	34,59%	33,97%	66,75%	65,41%	66,03%
47	457	522	979	148	176	324	32,39%	33,72%	33,09%	67,61%	66,28%	66,91%
48	450	449	899	182	159	341	40,44%	35,41%	37,93%	59,56%	64,59%	62,07%
49	452	499	951	191	190	381	42,26%	38,08%	40,06%	57,74%	61,92%	59,94%
50	375	403	778	123	131	254	32,80%	32,51%	32,65%	67,20%	67,49%	67,35%
51	426	445	871	118	115	233	27,70%	25,84%	26,75%	72,30%	74,16%	73,25%
52	402	435	837	142	158	300	35,32%	36,32%	35,84%	64,68%	63,68%	64,16%
53	441	467	908	122	132	254	27,66%	28,27%	27,97%	72,34%	71,73%	72,03%
54	646	625	1271	220	205	425	34,06%	32,80%	33,44%	65,94%	67,20%	66,56%
55	333	362	695	108	88	196	32,43%	24,31%	28,20%	67,57%	75,69%	71,80%
56	381	433	814	123	149	272	32,28%	34,41%	33,42%	67,72%	65,59%	66,58%
57	465	510	975	123	145	268	26,45%	28,43%	27,49%	73,55%	71,57%	72,51%
58	432	407	839	155	153	308	35,88%	37,59%	36,71%	64,12%	62,41%	63,29%
59	459	486	945	146	145	291	31,81%	29,84%	30,79%	68,19%	70,16%	69,21%
60	443	466	909	143	162	305	32,28%	34,76%	33,55%	67,72%	65,24%	66,45%
61	406	428	834	109	124	233	26,85%	28,97%	27,94%	73,15%	71,03%	72,06%
62	478	511	989	151	171	322	31,59%	33,46%	32,56%	68,41%	66,54%	67,44%
63	551	583	1134	145	180	325	26,32%	30,87%	28,66%	73,68%	69,13%	71,34%
64	313	317	630	96	86	182	30,67%	27,13%	28,89%	69,33%	72,87%	71,11%
65	243	239	482	62	51	113	25,51%	21,34%	23,44%	74,49%	78,66%	76,56%

Sez.	Elettori Iscritti			Votanti			% Votanti			% Astensionismo		
	Maschi	Femmine	Totale	Maschi	Femmine	Totale	Maschi	Femmine	Totale	Maschi	Femmine	Totale
66	266	284	550	72	66	138	27,07%	23,24%	25,09%	72,93%	76,76%	74,91%
67	488	523	1011	165	187	352	33,81%	35,76%	34,82%	66,19%	64,24%	65,18%
68	380	390	770	105	111	216	27,63%	28,46%	28,05%	72,37%	71,54%	71,95%
69	461	496	957	158	181	339	34,27%	36,49%	35,42%	65,73%	63,51%	64,58%
70	383	364	747	131	138	269	34,20%	37,91%	36,01%	65,80%	62,09%	63,99%
71	609	640	1249	202	223	425	33,17%	34,84%	34,03%	66,83%	65,16%	65,97%
72	579	583	1162	164	190	354	28,32%	32,59%	30,46%	71,68%	67,41%	69,54%
73	544	571	1115	153	181	334	28,13%	31,70%	29,96%	71,88%	68,30%	70,04%
74	251	291	542	75	85	160	29,88%	29,21%	29,52%	70,12%	70,79%	70,48%
75	495	507	1002	159	176	335	32,12%	34,71%	33,43%	67,88%	65,29%	66,57%
76	501	508	1009	178	171	349	35,53%	33,66%	34,59%	64,47%	66,34%	65,41%
77	454	495	949	130	138	268	28,63%	27,88%	28,24%	71,37%	72,12%	71,76%
78	258	259	517	74	72	146	28,68%	27,80%	28,24%	71,32%	72,20%	71,76%
79	500	536	1036	144	134	278	28,80%	25,00%	26,83%	71,20%	75,00%	73,17%
80	547	590	1137	162	169	331	29,62%	28,64%	29,11%	70,38%	71,36%	70,89%
81	365	377	742	113	116	229	30,96%	30,77%	30,86%	69,04%	69,23%	69,14%
82	353	333	686	106	96	202	30,03%	28,83%	29,45%	69,97%	71,17%	70,55%
83	332	347	679	69	62	131	20,78%	17,87%	19,29%	79,22%	82,13%	80,71%
84	412	410	822	117	117	234	28,40%	28,54%	28,47%	71,60%	71,46%	71,53%
85	56	51	107	5	4	9	8,93%	7,84%	8,41%	91,07%	92,16%	91,59%
86	65	67	132	15	8	23	23,08%	11,94%	17,42%	76,92%	88,06%	82,58%
87	387	431	818	140	153	293	36,18%	35,50%	35,82%	63,82%	64,50%	64,18%
88	354	403	757	124	132	256	35,03%	32,75%	33,82%	64,97%	67,25%	66,18%
89	305	324	629	97	105	202	31,80%	32,41%	32,11%	68,20%	67,59%	67,89%
90	359	384	743	117	134	251	32,59%	34,90%	33,78%	67,41%	65,10%	66,22%
91	380	395	775	105	123	228	27,63%	31,14%	29,42%	72,37%	68,86%	70,58%
92	0	0	0	19	14	33						
93	0	0	0	5	4	9						
Totale	35956	40064	76020	11594	12581	24175	32,24%	31,40%	31,80%	67,76%	68,60%	68,20%

**REFERENDUM POPOLARE
NORME SUI LIMITI ALL'ACCESSO
RIASSUNTO FINALE**

Elettori aventi diritto al voto:

MASCHI:	35956	FEMMINE:	40064	TOTALE:	76020
----------------	--------------	-----------------	--------------	----------------	--------------

Votanti:

MASCHI:	11589	FEMMINE:	12585	TOTALE:	24174
----------------	--------------	-----------------	--------------	----------------	--------------

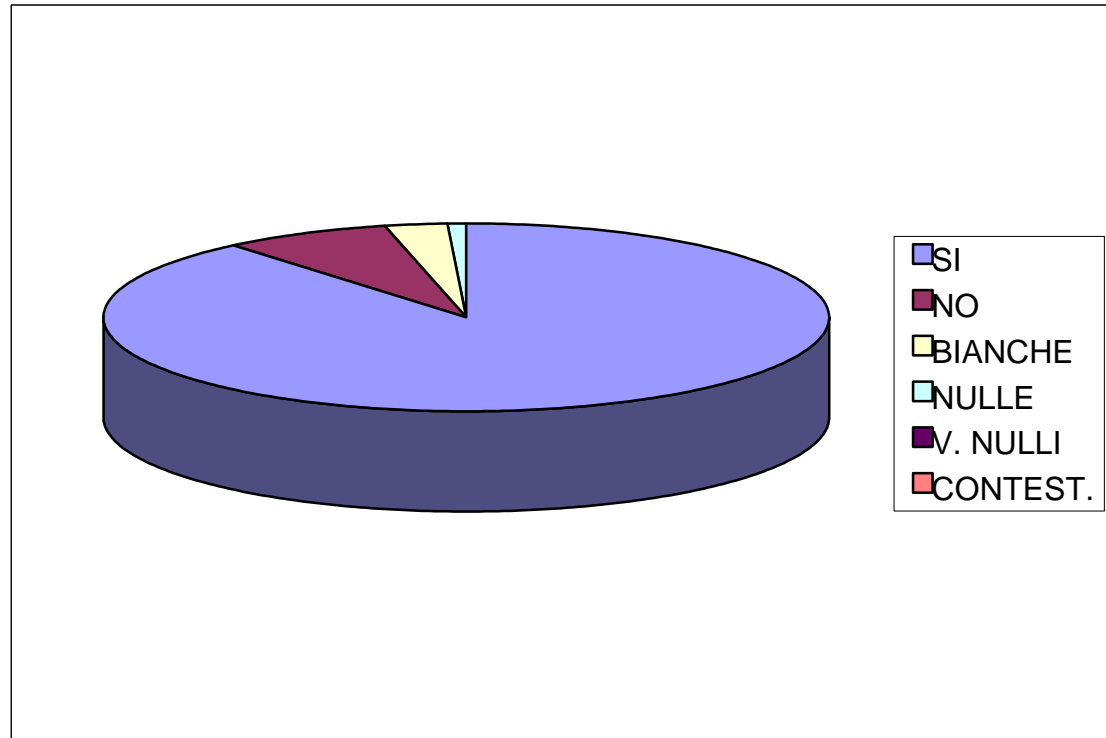
Voti Espresi:

SI	21493	NO	1834
-----------	--------------	-----------	-------------

BIANCHE	641	NULLE	205	V. NULLE	1	CONTEST.	0
----------------	------------	--------------	------------	-----------------	----------	-----------------	----------

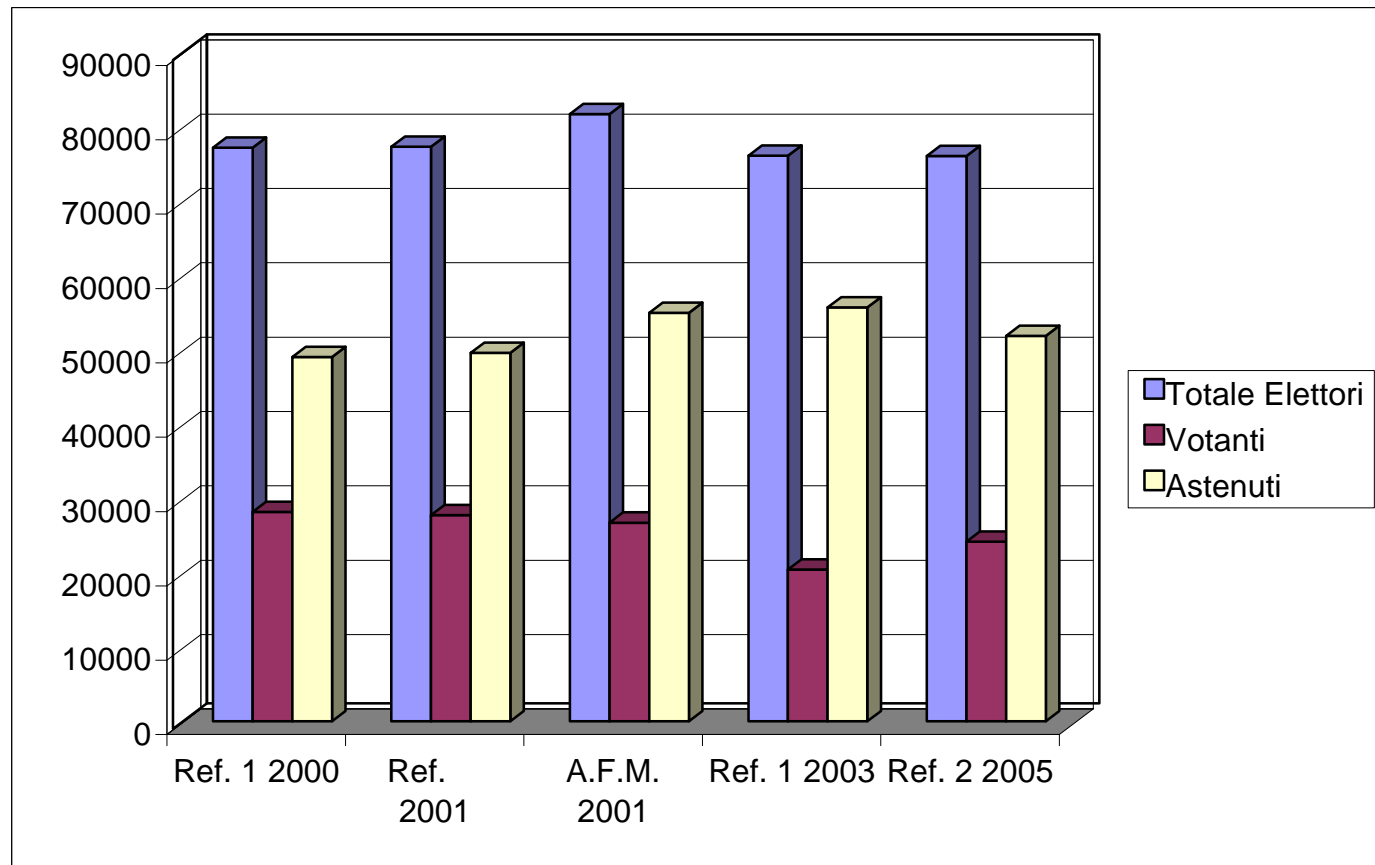
REFERENDUM POPOLARE NORME SUI LIMITI ALL'ACCESSO

SI	21493
NO	1834
BIANCHE	641
NULLE	205
V. NULLI	1
CONTEST.	0



REFERENDUM POPOLARE NORME SUI LIMITI ALL'ACCESSO

TOTALE ELETTORI CHE HANNO DIRITTO AL VOTO, VOTANTI E ASTENUTI AI REFERENDUM DAL 1999 AL 2005



REFERENDUM POPOLARE
NORME SUI LIMITI ALL'ACCESSO - RISULTATO FINALE PER SEZIONE

Sez.	Elettori Iscritti			Votanti			Voti Validi			Voti Nulli			
	Maschi	Femmine	Totale	Maschi	Femmine	Totale	SI	NO	Nulle	Bianche	Contest.	V. Nulli	
1	407	480	887	147	161	308	275	23	3	7	0	0	
2	243	267	510	80	90	170	155	11	1	3	0	0	
3	132	166	298	41	44	85	76	6	0	3	0	0	
4	293	368	661	102	122	224	212	10	1	1	0	0	
5	297	350	647	68	86	154	142	11	0	1	0	0	
6	349	450	799	135	153	288	263	21	2	2	0	0	
7	288	351	639	119	115	234	202	16	4	12	0	0	
8	358	435	793	120	141	261	232	20	4	5	0	0	
9	392	527	919	130	132	262	244	10	2	6	0	0	
10	330	412	742	121	139	260	225	22	3	10	0	0	
11	463	530	993	176	193	369	331	30	0	8	0	0	
12	424	495	919	148	156	304	271	24	3	6	0	0	
13	336	458	794	110	141	251	215	23	2	11	0	0	
14	509	588	1097	175	204	379	356	11	6	6	0	0	
15	445	485	930	166	172	338	296	27	5	10	0	0	
16	262	302	564	86	96	182	162	16	1	3	0	0	
17	225	228	453	81	86	167	151	8	1	7	0	0	
18	498	581	1079	170	197	367	333	23	3	8	0	0	
19	479	538	1017	149	170	319	286	24	3	6	0	0	
20	305	371	676	108	112	220	191	20	3	6	0	0	
21	431	454	885	162	161	323	293	22	0	8	0	0	
22	290	390	680	74	99	173	147	18	2	6	0	0	
23	432	489	921	133	136	269	245	17	1	6	0	0	
24	410	462	872	142	150	292	258	19	3	12	0	0	
25	457	592	1049	154	202	356	326	18	3	9	0	0	
26	407	522	929	108	136	244	214	24	2	4	0	0	
27	348	367	715	126	106	232	212	14	2	4	0	0	
28	224	236	460	55	55	110	94	10	1	5	0	0	
29	465	560	1025	174	226	400	358	25	4	13	0	0	
30	410	394	804	119	122	241	212	22	1	6	0	0	
31	419	444	863	146	170	316	281	26	1	8	0	0	

Sez.	Elettori Iscritti			Votanti			Voti Validi		Voti Nulli			
	Maschi	Femmine	Totale	Maschi	Femmine	Totale	SI	NO	Nulle	Bianche	Contest.	V. Nulli
32	428	493	921	140	150	290	261	15	0	14	0	0
33	405	504	909	128	143	271	244	17	1	9	0	0
34	407	501	908	130	174	304	274	17	2	11	0	0
35	405	496	901	114	124	238	211	25	0	2	0	0
36	399	461	860	110	142	252	221	19	2	10	0	0
37	502	597	1099	159	178	337	301	27	4	5	0	0
38	502	610	1112	195	204	399	355	28	5	11	0	0
39	414	536	950	119	136	255	216	24	4	11	0	0
40	335	437	772	94	115	209	187	15	1	5	0	1
41	412	484	896	145	152	297	271	17	2	7	0	0
42	403	484	887	133	152	285	242	32	1	10	0	0
43	387	466	853	149	159	308	279	19	3	7	0	0
44	525	561	1086	168	174	342	313	23	2	4	0	0
45	449	519	968	129	132	261	223	25	2	11	0	0
46	418	477	895	139	165	304	276	21	0	7	0	0
47	457	522	979	148	176	324	284	28	4	8	0	0
48	450	449	899	183	160	343	309	25	2	7	0	0
49	452	499	951	191	190	381	344	23	3	11	0	0
50	375	403	778	123	131	254	225	27	1	1	0	0
51	426	445	871	118	115	233	207	19	1	6	0	0
52	402	435	837	142	158	300	280	13	2	5	0	0
53	441	467	908	122	132	254	220	25	2	7	0	0
54	646	625	1271	220	205	425	367	34	3	21	0	0
55	333	362	695	108	88	196	170	17	2	7	0	0
56	381	433	814	123	149	272	245	19	1	7	0	0
57	465	510	975	123	147	270	247	16	1	6	0	0
58	432	407	839	155	153	308	278	19	3	8	0	0
59	459	486	945	146	145	291	270	11	3	7	0	0
60	443	466	909	143	162	305	267	23	3	12	0	0
61	406	428	834	109	124	233	202	23	2	6	0	0
62	478	511	989	151	171	322	281	30	3	8	0	0
63	551	583	1134	145	180	325	277	31	6	11	0	0
64	313	317	630	96	86	182	158	19	1	4	0	0
65	243	239	482	62	51	113	97	11	1	4	0	0

Sez.	Elettori Iscritti			Votanti			Voti Validi		Voti Nulli			
	Maschi	Femmine	Totale	Maschi	Femmine	Totale	SI	NO	Nulle	Bianche	Contest.	V. Nulli
66	266	284	550	72	66	138	126	9	1	2	0	0
67	488	523	1011	165	187	352	307	33	2	10	0	0
68	380	390	770	105	111	216	194	16	2	4	0	0
69	461	496	957	158	181	339	305	24	2	8	0	0
70	383	364	747	131	138	269	245	13	9	2	0	0
71	609	640	1249	203	222	425	388	21	7	9	0	0
72	579	583	1162	164	190	354	315	28	3	8	0	0
73	544	571	1115	153	181	334	295	32	2	5	0	0
74	251	291	542	75	85	160	141	15	0	4	0	0
75	495	507	1002	159	176	335	303	20	5	7	0	0
76	501	508	1009	178	171	349	313	25	3	8	0	0
77	454	495	949	130	138	268	239	21	1	7	0	0
78	258	259	517	73	72	145	128	16	0	1	0	0
79	500	536	1036	144	134	278	216	42	4	16	0	0
80	547	590	1137	162	169	331	292	25	3	11	0	0
81	365	377	742	113	116	229	189	25	7	8	0	0
82	353	333	686	106	96	202	175	22	0	5	0	0
83	332	347	679	69	62	131	111	15	0	5	0	0
84	412	410	822	117	117	234	209	18	3	4	0	0
85	56	51	107	5	4	9	9	0	0	0	0	0
86	65	67	132	15	8	23	23	0	0	0	0	0
87	387	431	818	140	153	293	262	21	3	7	0	0
88	354	403	757	124	132	256	219	26	1	10	0	0
89	305	324	629	97	105	202	168	24	2	8	0	0
90	359	384	743	117	134	251	231	9	2	9	0	0
91	380	395	775	105	123	228	198	20	2	8	0	0
92	0	0	0	19	14	33	24	5	1	3	0	0
93	0	0	0	5	4	9	8	1	0	0	0	0
Totale	35956	40064	76020	11589	12585	24174	21493	1834	205	641	0	1
						31,80%	92,14%	7,86%				

REFERENDUM POPOLARE
NORME SUI LIMITI ALL'ACCESSO - % VOTANTI PER SEZIONE

Sez.	Elettori Iscritti			Votanti			% Votanti			% Astensionismo		
	Maschi	Femmine	Totale	Maschi	Femmine	Totale	Maschi	Femmine	Totale	Maschi	Femmine	Totale
1	407	480	887	147	161	308	36,12%	33,54%	34,72%	63,88%	66,46%	65,28%
2	243	267	510	80	90	170	32,92%	33,71%	33,33%	67,08%	66,29%	66,67%
3	132	166	298	41	44	85	31,06%	26,51%	28,52%	68,94%	73,49%	71,48%
4	293	368	661	102	122	224	34,81%	33,15%	33,89%	65,19%	66,85%	66,11%
5	297	350	647	68	86	154	22,90%	24,57%	23,80%	77,10%	75,43%	76,20%
6	349	450	799	135	153	288	38,68%	34,00%	36,05%	61,32%	66,00%	63,95%
7	288	351	639	119	115	234	41,32%	32,76%	36,62%	58,68%	67,24%	63,38%
8	358	435	793	120	141	261	33,52%	32,41%	32,91%	66,48%	67,59%	67,09%
9	392	527	919	130	132	262	33,16%	25,05%	28,51%	66,84%	74,95%	71,49%
10	330	412	742	121	139	260	36,67%	33,74%	35,04%	63,33%	66,26%	64,96%
11	463	530	993	176	193	369	38,01%	36,42%	37,16%	61,99%	63,58%	62,84%
12	424	495	919	148	156	304	34,91%	31,52%	33,08%	65,09%	68,48%	66,92%
13	336	458	794	110	141	251	32,74%	30,79%	31,61%	67,26%	69,21%	68,39%
14	509	588	1097	175	204	379	34,38%	34,69%	34,55%	65,62%	65,31%	65,45%
15	445	485	930	166	172	338	37,30%	35,46%	36,34%	62,70%	64,54%	63,66%
16	262	302	564	86	96	182	32,82%	31,79%	32,27%	67,18%	68,21%	67,73%
17	225	228	453	81	86	167	36,00%	37,72%	36,87%	64,00%	62,28%	63,13%
18	498	581	1079	170	197	367	34,14%	33,91%	34,01%	65,86%	66,09%	65,99%
19	479	538	1017	149	170	319	31,11%	31,60%	31,37%	68,89%	68,40%	68,63%
20	305	371	676	108	112	220	35,41%	30,19%	32,54%	64,59%	69,81%	67,46%
21	431	454	885	162	161	323	37,59%	35,46%	36,50%	62,41%	64,54%	63,50%
22	290	390	680	74	99	173	25,52%	25,38%	25,44%	74,48%	74,62%	74,56%
23	432	489	921	133	136	269	30,79%	27,81%	29,21%	69,21%	72,19%	70,79%
24	410	462	872	142	150	292	34,63%	32,47%	33,49%	65,37%	67,53%	66,51%
25	457	592	1049	154	202	356	33,70%	34,12%	33,94%	66,30%	65,88%	66,06%
26	407	522	929	108	136	244	26,54%	26,05%	26,26%	73,46%	73,95%	73,74%
27	348	367	715	126	106	232	36,21%	28,88%	32,45%	63,79%	71,12%	67,55%
28	224	236	460	55	55	110	24,55%	23,31%	23,91%	75,45%	76,69%	76,09%
29	465	560	1025	174	226	400	37,42%	40,36%	39,02%	62,58%	59,64%	60,98%
30	410	394	804	119	122	241	29,02%	30,96%	29,98%	70,98%	69,04%	70,02%
31	419	444	863	146	170	316	34,84%	38,29%	36,62%	65,16%	61,71%	63,38%

Sez.	Elettori Iscritti			Votanti			% Votanti			% Astensionismo		
	Maschi	Femmine	Totale	Maschi	Femmine	Totale	Maschi	Femmine	Totale	Maschi	Femmine	Totale
32	428	493	921	140	150	290	32,71%	30,43%	31,49%	67,29%	69,57%	68,51%
33	405	504	909	128	143	271	31,60%	28,37%	29,81%	68,40%	71,63%	70,19%
34	407	501	908	130	174	304	31,94%	34,73%	33,48%	68,06%	65,27%	66,52%
35	405	496	901	114	124	238	28,15%	25,00%	26,42%	71,85%	75,00%	73,58%
36	399	461	860	110	142	252	27,57%	30,80%	29,30%	72,43%	69,20%	70,70%
37	502	597	1099	159	178	337	31,67%	29,82%	30,66%	68,33%	70,18%	69,34%
38	502	610	1112	195	204	399	38,84%	33,44%	35,88%	61,16%	66,56%	64,12%
39	414	536	950	119	136	255	28,74%	25,37%	26,84%	71,26%	74,63%	73,16%
40	335	437	772	94	115	209	28,06%	26,32%	27,07%	71,94%	73,68%	72,93%
41	412	484	896	145	152	297	35,19%	31,40%	33,15%	64,81%	68,60%	66,85%
42	403	484	887	133	152	285	33,00%	31,40%	32,13%	67,00%	68,60%	67,87%
43	387	466	853	149	159	308	38,50%	34,12%	36,11%	61,50%	65,88%	63,89%
44	525	561	1086	168	174	342	32,00%	31,02%	31,49%	68,00%	68,98%	68,51%
45	449	519	968	129	132	261	28,73%	25,43%	26,96%	71,27%	74,57%	73,04%
46	418	477	895	139	165	304	33,25%	34,59%	33,97%	66,75%	65,41%	66,03%
47	457	522	979	148	176	324	32,39%	33,72%	33,09%	67,61%	66,28%	66,91%
48	450	449	899	183	160	343	40,67%	35,63%	38,15%	59,33%	64,37%	61,85%
49	452	499	951	191	190	381	42,26%	38,08%	40,06%	57,74%	61,92%	59,94%
50	375	403	778	123	131	254	32,80%	32,51%	32,65%	67,20%	67,49%	67,35%
51	426	445	871	118	115	233	27,70%	25,84%	26,75%	72,30%	74,16%	73,25%
52	402	435	837	142	158	300	35,32%	36,32%	35,84%	64,68%	63,68%	64,16%
53	441	467	908	122	132	254	27,66%	28,27%	27,97%	72,34%	71,73%	72,03%
54	646	625	1271	220	205	425	34,06%	32,80%	33,44%	65,94%	67,20%	66,56%
55	333	362	695	108	88	196	32,43%	24,31%	28,20%	67,57%	75,69%	71,80%
56	381	433	814	123	149	272	32,28%	34,41%	33,42%	67,72%	65,59%	66,58%
57	465	510	975	123	147	270	26,45%	28,82%	27,69%	73,55%	71,18%	72,31%
58	432	407	839	155	153	308	35,88%	37,59%	36,71%	64,12%	62,41%	63,29%
59	459	486	945	146	145	291	31,81%	29,84%	30,79%	68,19%	70,16%	69,21%
60	443	466	909	143	162	305	32,28%	34,76%	33,55%	67,72%	65,24%	66,45%
61	406	428	834	109	124	233	26,85%	28,97%	27,94%	73,15%	71,03%	72,06%
62	478	511	989	151	171	322	31,59%	33,46%	32,56%	68,41%	66,54%	67,44%
63	551	583	1134	145	180	325	26,32%	30,87%	28,66%	73,68%	69,13%	71,34%
64	313	317	630	96	86	182	30,67%	27,13%	28,89%	69,33%	72,87%	71,11%
65	243	239	482	62	51	113	25,51%	21,34%	23,44%	74,49%	78,66%	76,56%

Sez.	Elettori Iscritti			Votanti			% Votanti			% Astensionismo		
	Maschi	Femmine	Totale	Maschi	Femmine	Totale	Maschi	Femmine	Totale	Maschi	Femmine	Totale
66	266	284	550	72	66	138	27,07%	23,24%	25,09%	72,93%	76,76%	74,91%
67	488	523	1011	165	187	352	33,81%	35,76%	34,82%	66,19%	64,24%	65,18%
68	380	390	770	105	111	216	27,63%	28,46%	28,05%	72,37%	71,54%	71,95%
69	461	496	957	158	181	339	34,27%	36,49%	35,42%	65,73%	63,51%	64,58%
70	383	364	747	131	138	269	34,20%	37,91%	36,01%	65,80%	62,09%	63,99%
71	609	640	1249	203	222	425	33,33%	34,69%	34,03%	66,67%	65,31%	65,97%
72	579	583	1162	164	190	354	28,32%	32,59%	30,46%	71,68%	67,41%	69,54%
73	544	571	1115	153	181	334	28,13%	31,70%	29,96%	71,88%	68,30%	70,04%
74	251	291	542	75	85	160	29,88%	29,21%	29,52%	70,12%	70,79%	70,48%
75	495	507	1002	159	176	335	32,12%	34,71%	33,43%	67,88%	65,29%	66,57%
76	501	508	1009	178	171	349	35,53%	33,66%	34,59%	64,47%	66,34%	65,41%
77	454	495	949	130	138	268	28,63%	27,88%	28,24%	71,37%	72,12%	71,76%
78	258	259	517	73	72	145	28,29%	27,80%	28,05%	71,71%	72,20%	71,95%
79	500	536	1036	144	134	278	28,80%	25,00%	26,83%	71,20%	75,00%	73,17%
80	547	590	1137	162	169	331	29,62%	28,64%	29,11%	70,38%	71,36%	70,89%
81	365	377	742	113	116	229	30,96%	30,77%	30,86%	69,04%	69,23%	69,14%
82	353	333	686	106	96	202	30,03%	28,83%	29,45%	69,97%	71,17%	70,55%
83	332	347	679	69	62	131	20,78%	17,87%	19,29%	79,22%	82,13%	80,71%
84	412	410	822	117	117	234	28,40%	28,54%	28,47%	71,60%	71,46%	71,53%
85	56	51	107	5	4	9	8,93%	7,84%	8,41%	91,07%	92,16%	91,59%
86	65	67	132	15	8	23	23,08%	11,94%	17,42%	76,92%	88,06%	82,58%
87	387	431	818	140	153	293	36,18%	35,50%	35,82%	63,82%	64,50%	64,18%
88	354	403	757	124	132	256	35,03%	32,75%	33,82%	64,97%	67,25%	66,18%
89	305	324	629	97	105	202	31,80%	32,41%	32,11%	68,20%	67,59%	67,89%
90	359	384	743	117	134	251	32,59%	34,90%	33,78%	67,41%	65,10%	66,22%
91	380	395	775	105	123	228	27,63%	31,14%	29,42%	72,37%	68,86%	70,58%
92	0	0	0	19	14	33						
93	0	0	0	5	4	9						
Totale	35956	40064	76020	11589	12585	24174	32,23%	31,41%	31,80%	67,77%	68,59%	68,20%

REFERENDUM POPOLARE
NORME SULLE FINALITA', SUI DIRITTI DEI SOGGETTI COINVOLTI E SUI LIMITI DI ACCESSO
RIASSUNTO FINALE

Elettori aventi diritto al voto:

MASCHI:	35956	FEMMINE:	40064	TOTALE:	76020
----------------	--------------	-----------------	--------------	----------------	--------------

Votanti:

MASCHI:	11583	FEMMINE:	12584	TOTALE:	24167
----------------	--------------	-----------------	--------------	----------------	--------------

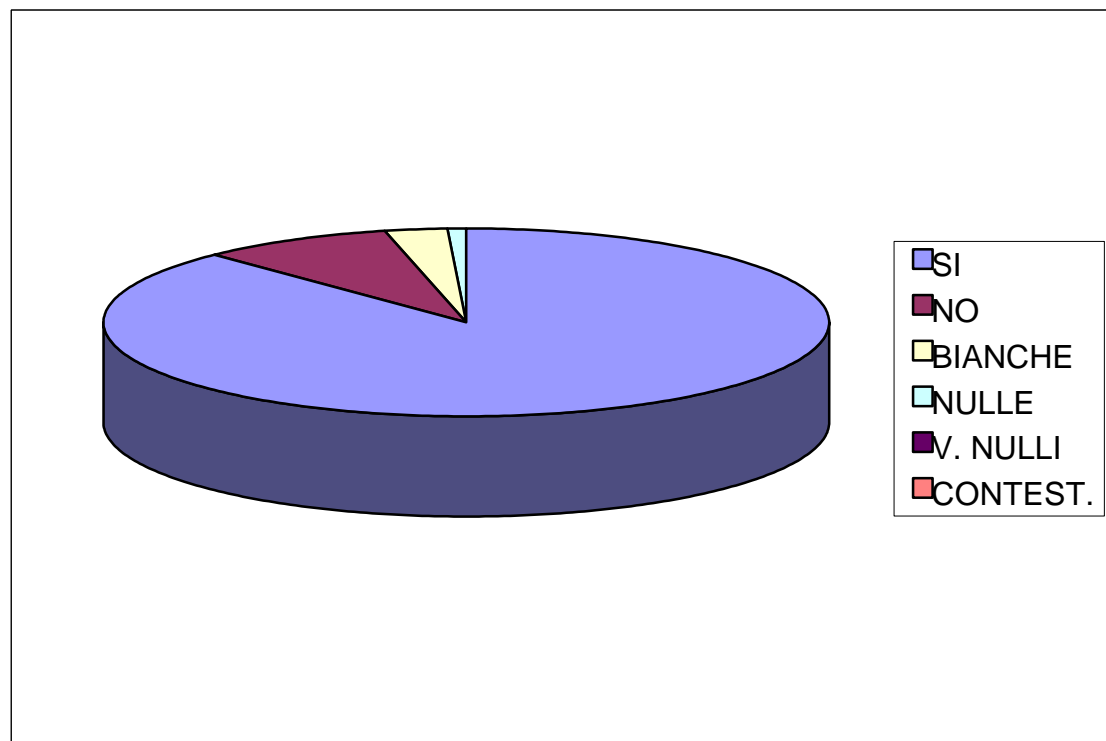
Voti Espresi:

SI	21198	NO	2093
-----------	--------------	-----------	-------------

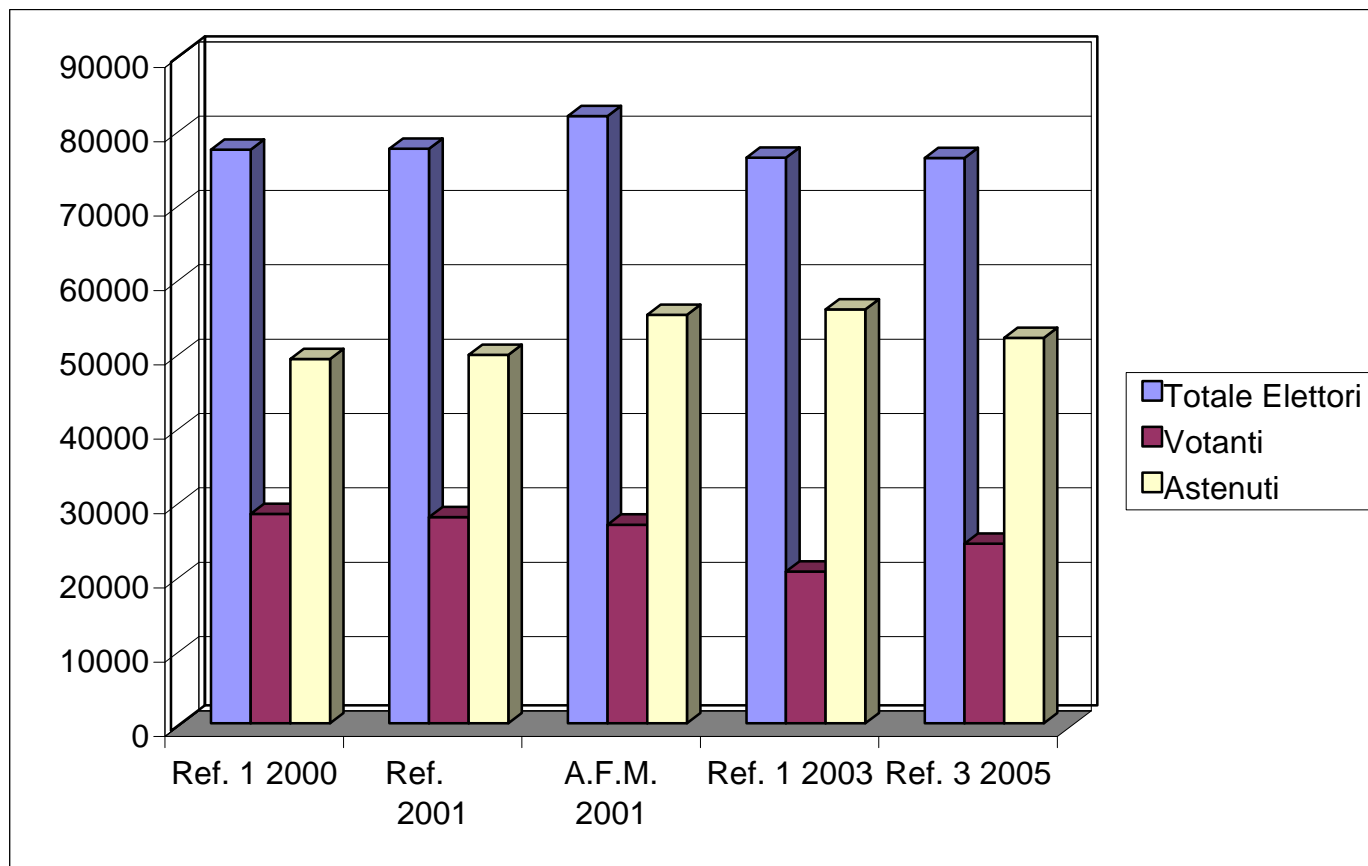
BIANCHE	669	NULLE	207	V. NULLE	0	CONTEST.	0
----------------	------------	--------------	------------	-----------------	----------	-----------------	----------

REFERENDUM POPOLARE
NORME SULLE FINALITA', SUI DIRITTI DEI SOGGETTI COINVOLTI E SUI LIMITI DI ACCESSO

SI	21198
NO	2093
BIANCHE	669
NULLE	207
V. NULLI	0
CONTEST.	0



REFERENDUM POPOLARE
NORME SULLE FINALITA', SUI DIRITTI DEI SOGGETTI COINVOLTI E SUI LIMITI DI ACCESSO
TOTALE ELETTORI CHE HANNO DIRITTO AL VOTO, VOTANTI E ASTENUTI AI REFERENDUM DAL 1999 AL 2005



REFERENDUM POPOLARE

NORME SULLE FINALITA', SUI DIRITTI DEI SOGGETTI COINVOLTI E SUI LIMITI DI ACCESSO - RISULTATO FINALE PER SEZIONE

Sez.	Elettori Iscritti			Votanti			Voti Validi		Voti Nulli			
	Maschi	Femmine	Totale	Maschi	Femmine	Totale	SI	NO	Nulle	Bianche	Contest.	V. Nulli
1	407	480	887	147	161	308	279	19	3	7	0	0
2	243	267	510	80	90	170	152	13	2	3	0	0
3	132	166	298	41	44	85	77	5	0	3	0	0
4	293	368	661	102	122	224	211	11	2	0	0	0
5	297	350	647	68	86	154	136	14	0	4	0	0
6	349	450	799	135	153	288	262	19	3	4	0	0
7	288	351	639	119	115	234	196	24	3	11	0	0
8	358	435	793	120	141	261	233	19	3	6	0	0
9	392	527	919	130	132	262	241	16	0	5	0	0
10	330	412	742	121	139	260	228	22	1	9	0	0
11	463	530	993	176	193	369	328	31	1	9	0	0
12	424	495	919	147	156	303	272	22	3	6	0	0
13	336	458	794	111	142	253	210	31	2	10	0	0
14	509	588	1097	175	204	379	349	16	5	9	0	0
15	445	485	930	166	172	338	292	32	5	9	0	0
16	262	302	564	86	96	182	158	19	1	4	0	0
17	225	228	453	80	86	166	147	9	1	9	0	0
18	498	581	1079	171	197	368	325	32	1	10	0	0
19	479	538	1017	149	170	319	280	30	3	6	0	0
20	305	371	676	108	112	220	190	17	4	9	0	0
21	431	454	885	163	161	324	294	25	0	5	0	0
22	290	390	680	74	99	173	149	19	1	4	0	0
23	432	489	921	133	136	269	239	22	1	7	0	0
24	410	462	872	142	150	292	255	24	3	10	0	0
25	457	592	1049	154	202	356	324	23	1	8	0	0
26	407	522	929	107	136	243	208	28	3	4	0	0
27	348	367	715	126	106	232	208	18	2	4	0	0
28	224	236	460	55	55	110	93	11	1	5	0	0
29	465	560	1025	173	225	398	343	38	5	12	0	0
30	410	394	804	119	122	241	205	29	1	6	0	0
31	419	444	863	146	170	316	275	28	2	11	0	0

Sez.	Elettori Iscritti			Votanti			Voti Validi		Voti Nulli			
	Maschi	Femmine	Totale	Maschi	Femmine	Totale	SI	NO	Nulle	Bianche	Contest.	V. Nulli
32	428	493	921	140	150	290	261	15	0	14	0	0
33	405	504	909	128	143	271	236	24	2	9	0	0
34	407	501	908	130	174	304	269	22	2	11	0	0
35	405	496	901	114	124	238	204	29	1	4	0	0
36	399	461	860	110	142	252	223	17	3	9	0	0
37	502	597	1099	158	178	336	293	32	3	8	0	0
38	502	610	1112	195	204	399	353	32	4	10	0	0
39	414	536	950	119	136	255	208	31	4	12	0	0
40	335	437	772	94	115	209	185	16	1	7	0	0
41	412	484	896	145	152	297	273	14	3	7	0	0
42	403	484	887	133	152	285	239	38	2	6	0	0
43	387	466	853	149	159	308	274	23	3	8	0	0
44	525	561	1086	168	173	341	308	25	3	5	0	0
45	449	519	968	129	132	261	225	22	3	11	0	0
46	418	477	895	138	165	303	274	21	0	8	0	0
47	457	522	979	148	176	324	285	27	4	8	0	0
48	450	449	899	182	159	341	309	24	1	7	0	0
49	452	499	951	191	190	381	336	31	2	12	0	0
50	375	403	778	123	131	254	223	27	1	3	0	0
51	426	445	871	118	115	233	204	21	2	6	0	0
52	402	435	837	142	158	300	276	16	2	6	0	0
53	441	467	908	122	132	254	215	31	2	6	0	0
54	646	625	1271	220	205	425	365	32	4	24	0	0
55	333	362	695	108	88	196	170	17	2	7	0	0
56	381	433	814	123	149	272	240	22	2	8	0	0
57	465	510	975	123	147	270	247	15	1	7	0	0
58	432	407	839	155	153	308	275	21	3	9	0	0
59	459	486	945	146	145	291	264	18	2	7	0	0
60	443	466	909	143	162	305	267	23	3	12	0	0
61	406	428	834	109	124	233	200	22	2	9	0	0
62	478	511	989	151	171	322	275	34	3	10	0	0
63	551	583	1134	144	179	323	266	42	4	11	0	0
64	313	317	630	96	86	182	155	22	1	4	0	0
65	243	239	482	62	51	113	92	13	1	7	0	0

Sez.	Elettori Iscritti			Votanti			Voti Validi			Voti Nulli			
	Maschi	Femmine	Totale	Maschi	Femmine	Totale	SI	NO	Nulle	Bianche	Contest.	V. Nulli	
66	266	284	550	72	66	138	124	11	1	2	0	0	
67	488	523	1011	165	187	352	308	33	4	7	0	0	
68	380	390	770	105	111	216	195	17	1	3	0	0	
69	461	496	957	158	181	339	306	22	1	10	0	0	
70	383	364	747	131	139	270	231	23	10	6	0	0	
71	609	640	1249	203	223	426	391	22	5	8	0	0	
72	579	583	1162	164	190	354	305	37	3	9	0	0	
73	544	571	1115	153	181	334	295	32	1	6	0	0	
74	251	291	542	75	85	160	136	21	1	2	0	0	
75	495	507	1002	159	176	335	277	44	4	10	0	0	
76	501	508	1009	178	171	349	311	25	4	9	0	0	
77	454	495	949	130	138	268	238	23	1	6	0	0	
78	258	259	517	74	72	146	128	16	0	2	0	0	
79	500	536	1036	144	134	278	213	44	6	15	0	0	
80	547	590	1137	162	169	331	280	36	5	10	0	0	
81	365	377	742	112	116	228	184	28	8	8	0	0	
82	353	333	686	106	96	202	168	27	1	6	0	0	
83	332	347	679	69	62	131	112	14	0	5	0	0	
84	412	410	822	117	117	234	209	18	3	4	0	0	
85	56	51	107	5	4	9	8	1	0	0	0	0	
86	65	67	132	15	8	23	22	0	0	1	0	0	
87	387	431	818	139	153	292	256	28	3	5	0	0	
88	354	403	757	124	132	256	218	27	0	11	0	0	
89	305	324	629	97	105	202	171	23	2	6	0	0	
90	359	384	743	117	134	251	231	10	3	7	0	0	
91	380	395	775	105	123	228	202	18	1	7	0	0	
92	0	0	0	19	14	33	24	6	0	3	0	0	
93	0	0	0	5	4	9	7	2	0	0	0	0	
Totale	35956	40064	76020	11583	12584	24167	21198	2093	207	669	0	0	
						31,79%	91,01%	8,99%					

REFERENDUM POPOLARE

NORME SULLE FINALITA', SUI DIRITTI DEI SOGGETTI COINVOLTI E SUI LIMITI DI ACCESSO - % VOTANTI PER SEZIONE

Sez.	Elettori Iscritti			Votanti			% Votanti			% Astensionismo		
	Maschi	Femmine	Totale	Maschi	Femmine	Totale	Maschi	Femmine	Totale	Maschi	Femmine	Totale
1	407	480	887	147	161	308	36,12%	33,54%	34,72%	63,88%	66,46%	65,28%
2	243	267	510	80	90	170	32,92%	33,71%	33,33%	67,08%	66,29%	66,67%
3	132	166	298	41	44	85	31,06%	26,51%	28,52%	68,94%	73,49%	71,48%
4	293	368	661	102	122	224	34,81%	33,15%	33,89%	65,19%	66,85%	66,11%
5	297	350	647	68	86	154	22,90%	24,57%	23,80%	77,10%	75,43%	76,20%
6	349	450	799	135	153	288	38,68%	34,00%	36,05%	61,32%	66,00%	63,95%
7	288	351	639	119	115	234	41,32%	32,76%	36,62%	58,68%	67,24%	63,38%
8	358	435	793	120	141	261	33,52%	32,41%	32,91%	66,48%	67,59%	67,09%
9	392	527	919	130	132	262	33,16%	25,05%	28,51%	66,84%	74,95%	71,49%
10	330	412	742	121	139	260	36,67%	33,74%	35,04%	63,33%	66,26%	64,96%
11	463	530	993	176	193	369	38,01%	36,42%	37,16%	61,99%	63,58%	62,84%
12	424	495	919	147	156	303	34,67%	31,52%	32,97%	65,33%	68,48%	67,03%
13	336	458	794	111	142	253	33,04%	31,00%	31,86%	66,96%	69,00%	68,14%
14	509	588	1097	175	204	379	34,38%	34,69%	34,55%	65,62%	65,31%	65,45%
15	445	485	930	166	172	338	37,30%	35,46%	36,34%	62,70%	64,54%	63,66%
16	262	302	564	86	96	182	32,82%	31,79%	32,27%	67,18%	68,21%	67,73%
17	225	228	453	80	86	166	35,56%	37,72%	36,64%	64,44%	62,28%	63,36%
18	498	581	1079	171	197	368	34,34%	33,91%	34,11%	65,66%	66,09%	65,89%
19	479	538	1017	149	170	319	31,11%	31,60%	31,37%	68,89%	68,40%	68,63%
20	305	371	676	108	112	220	35,41%	30,19%	32,54%	64,59%	69,81%	67,46%
21	431	454	885	163	161	324	37,82%	35,46%	36,61%	62,18%	64,54%	63,39%
22	290	390	680	74	99	173	25,52%	25,38%	25,44%	74,48%	74,62%	74,56%
23	432	489	921	133	136	269	30,79%	27,81%	29,21%	69,21%	72,19%	70,79%
24	410	462	872	142	150	292	34,63%	32,47%	33,49%	65,37%	67,53%	66,51%
25	457	592	1049	154	202	356	33,70%	34,12%	33,94%	66,30%	65,88%	66,06%
26	407	522	929	107	136	243	26,29%	26,05%	26,16%	73,71%	73,95%	73,84%
27	348	367	715	126	106	232	36,21%	28,88%	32,45%	63,79%	71,12%	67,55%
28	224	236	460	55	55	110	24,55%	23,31%	23,91%	75,45%	76,69%	76,09%
29	465	560	1025	173	225	398	37,20%	40,18%	38,83%	62,80%	59,82%	61,17%
30	410	394	804	119	122	241	29,02%	30,96%	29,98%	70,98%	69,04%	70,02%
31	419	444	863	146	170	316	34,84%	38,29%	36,62%	65,16%	61,71%	63,38%

Sez.	Elettori Iscritti			Votanti			% Votanti			% Astensionismo		
	Maschi	Femmine	Totale	Maschi	Femmine	Totale	Maschi	Femmine	Totale	Maschi	Femmine	Totale
32	428	493	921	140	150	290	32,71%	30,43%	31,49%	67,29%	69,57%	68,51%
33	405	504	909	128	143	271	31,60%	28,37%	29,81%	68,40%	71,63%	70,19%
34	407	501	908	130	174	304	31,94%	34,73%	33,48%	68,06%	65,27%	66,52%
35	405	496	901	114	124	238	28,15%	25,00%	26,42%	71,85%	75,00%	73,58%
36	399	461	860	110	142	252	27,57%	30,80%	29,30%	72,43%	69,20%	70,70%
37	502	597	1099	158	178	336	31,47%	29,82%	30,57%	68,53%	70,18%	69,43%
38	502	610	1112	195	204	399	38,84%	33,44%	35,88%	61,16%	66,56%	64,12%
39	414	536	950	119	136	255	28,74%	25,37%	26,84%	71,26%	74,63%	73,16%
40	335	437	772	94	115	209	28,06%	26,32%	27,07%	71,94%	73,68%	72,93%
41	412	484	896	145	152	297	35,19%	31,40%	33,15%	64,81%	68,60%	66,85%
42	403	484	887	133	152	285	33,00%	31,40%	32,13%	67,00%	68,60%	67,87%
43	387	466	853	149	159	308	38,50%	34,12%	36,11%	61,50%	65,88%	63,89%
44	525	561	1086	168	173	341	32,00%	30,84%	31,40%	68,00%	69,16%	68,60%
45	449	519	968	129	132	261	28,73%	25,43%	26,96%	71,27%	74,57%	73,04%
46	418	477	895	138	165	303	33,01%	34,59%	33,85%	66,99%	65,41%	66,15%
47	457	522	979	148	176	324	32,39%	33,72%	33,09%	67,61%	66,28%	66,91%
48	450	449	899	182	159	341	40,44%	35,41%	37,93%	59,56%	64,59%	62,07%
49	452	499	951	191	190	381	42,26%	38,08%	40,06%	57,74%	61,92%	59,94%
50	375	403	778	123	131	254	32,80%	32,51%	32,65%	67,20%	67,49%	67,35%
51	426	445	871	118	115	233	27,70%	25,84%	26,75%	72,30%	74,16%	73,25%
52	402	435	837	142	158	300	35,32%	36,32%	35,84%	64,68%	63,68%	64,16%
53	441	467	908	122	132	254	27,66%	28,27%	27,97%	72,34%	71,73%	72,03%
54	646	625	1271	220	205	425	34,06%	32,80%	33,44%	65,94%	67,20%	66,56%
55	333	362	695	108	88	196	32,43%	24,31%	28,20%	67,57%	75,69%	71,80%
56	381	433	814	123	149	272	32,28%	34,41%	33,42%	67,72%	65,59%	66,58%
57	465	510	975	123	147	270	26,45%	28,82%	27,69%	73,55%	71,18%	72,31%
58	432	407	839	155	153	308	35,88%	37,59%	36,71%	64,12%	62,41%	63,29%
59	459	486	945	146	145	291	31,81%	29,84%	30,79%	68,19%	70,16%	69,21%
60	443	466	909	143	162	305	32,28%	34,76%	33,55%	67,72%	65,24%	66,45%
61	406	428	834	109	124	233	26,85%	28,97%	27,94%	73,15%	71,03%	72,06%
62	478	511	989	151	171	322	31,59%	33,46%	32,56%	68,41%	66,54%	67,44%
63	551	583	1134	144	179	323	26,13%	30,70%	28,48%	73,87%	69,30%	71,52%
64	313	317	630	96	86	182	30,67%	27,13%	28,89%	69,33%	72,87%	71,11%
65	243	239	482	62	51	113	25,51%	21,34%	23,44%	74,49%	78,66%	76,56%

Sez.	Elettori Iscritti			Votanti			% Votanti			% Astensionismo		
	Maschi	Femmine	Totale	Maschi	Femmine	Totale	Maschi	Femmine	Totale	Maschi	Femmine	Totale
66	266	284	550	72	66	138	27,07%	23,24%	25,09%	72,93%	76,76%	74,91%
67	488	523	1011	165	187	352	33,81%	35,76%	34,82%	66,19%	64,24%	65,18%
68	380	390	770	105	111	216	27,63%	28,46%	28,05%	72,37%	71,54%	71,95%
69	461	496	957	158	181	339	34,27%	36,49%	35,42%	65,73%	63,51%	64,58%
70	383	364	747	131	139	270	34,20%	38,19%	36,14%	65,80%	61,81%	63,86%
71	609	640	1249	203	223	426	33,33%	34,84%	34,11%	66,67%	65,16%	65,89%
72	579	583	1162	164	190	354	28,32%	32,59%	30,46%	71,68%	67,41%	69,54%
73	544	571	1115	153	181	334	28,13%	31,70%	29,96%	71,88%	68,30%	70,04%
74	251	291	542	75	85	160	29,88%	29,21%	29,52%	70,12%	70,79%	70,48%
75	495	507	1002	159	176	335	32,12%	34,71%	33,43%	67,88%	65,29%	66,57%
76	501	508	1009	178	171	349	35,53%	33,66%	34,59%	64,47%	66,34%	65,41%
77	454	495	949	130	138	268	28,63%	27,88%	28,24%	71,37%	72,12%	71,76%
78	258	259	517	74	72	146	28,68%	27,80%	28,24%	71,32%	72,20%	71,76%
79	500	536	1036	144	134	278	28,80%	25,00%	26,83%	71,20%	75,00%	73,17%
80	547	590	1137	162	169	331	29,62%	28,64%	29,11%	70,38%	71,36%	70,89%
81	365	377	742	112	116	228	30,68%	30,77%	30,73%	69,32%	69,23%	69,27%
82	353	333	686	106	96	202	30,03%	28,83%	29,45%	69,97%	71,17%	70,55%
83	332	347	679	69	62	131	20,78%	17,87%	19,29%	79,22%	82,13%	80,71%
84	412	410	822	117	117	234	28,40%	28,54%	28,47%	71,60%	71,46%	71,53%
85	56	51	107	5	4	9	8,93%	7,84%	8,41%	91,07%	92,16%	91,59%
86	65	67	132	15	8	23	23,08%	11,94%	17,42%	76,92%	88,06%	82,58%
87	387	431	818	139	153	292	35,92%	35,50%	35,70%	64,08%	64,50%	64,30%
88	354	403	757	124	132	256	35,03%	32,75%	33,82%	64,97%	67,25%	66,18%
89	305	324	629	97	105	202	31,80%	32,41%	32,11%	68,20%	67,59%	67,89%
90	359	384	743	117	134	251	32,59%	34,90%	33,78%	67,41%	65,10%	66,22%
91	380	395	775	105	123	228	27,63%	31,14%	29,42%	72,37%	68,86%	70,58%
92	0	0	0	19	14	33						
93	0	0	0	5	4	9						
Totale	35956	40064	76020	11583	12584	24167	32,21%	31,41%	31,79%	67,79%	68,59%	68,21%

**REFERENDUM POPOLARE
DIVIETO DI FECONDAZIONE ETEROLOGA
RIASSUNTO FINALE**

Elettori aventi diritto al voto:

MASCHI:	35956	FEMMINE:	40064	TOTALE:	76020
----------------	--------------	-----------------	--------------	----------------	--------------

Votanti:

MASCHI:	11562	FEMMINE:	12571	TOTALE:	24133
----------------	--------------	-----------------	--------------	----------------	--------------

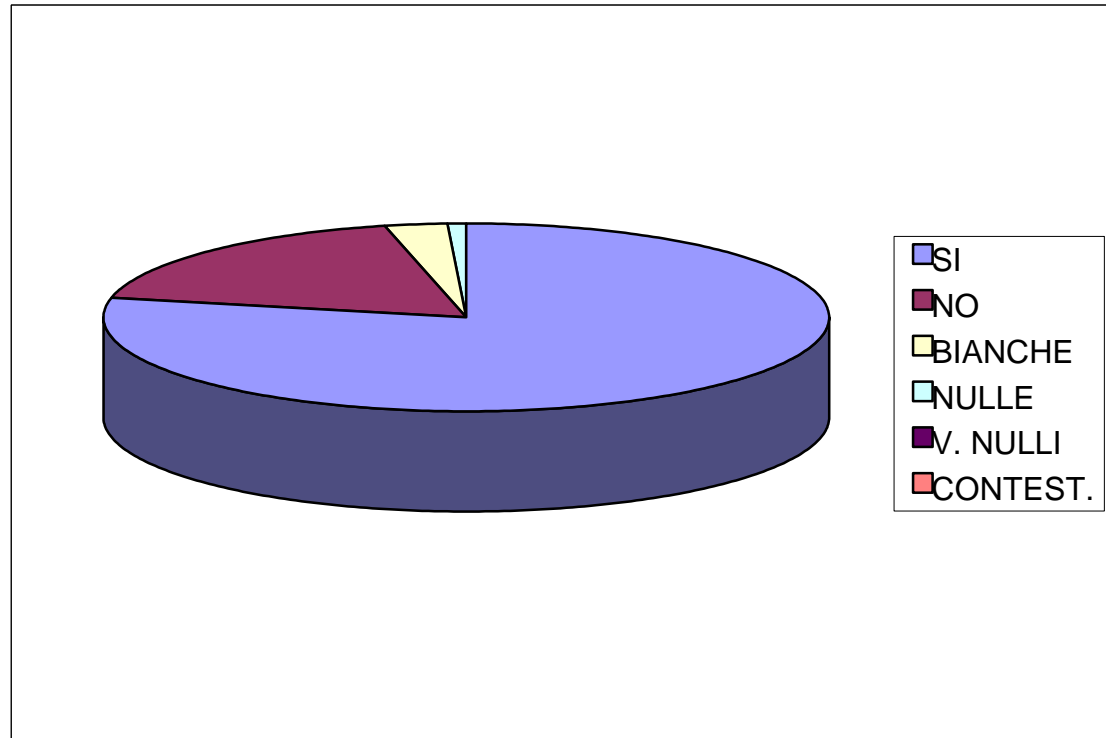
Voti Espresi:

SI	18880	NO	4353
-----------	--------------	-----------	-------------

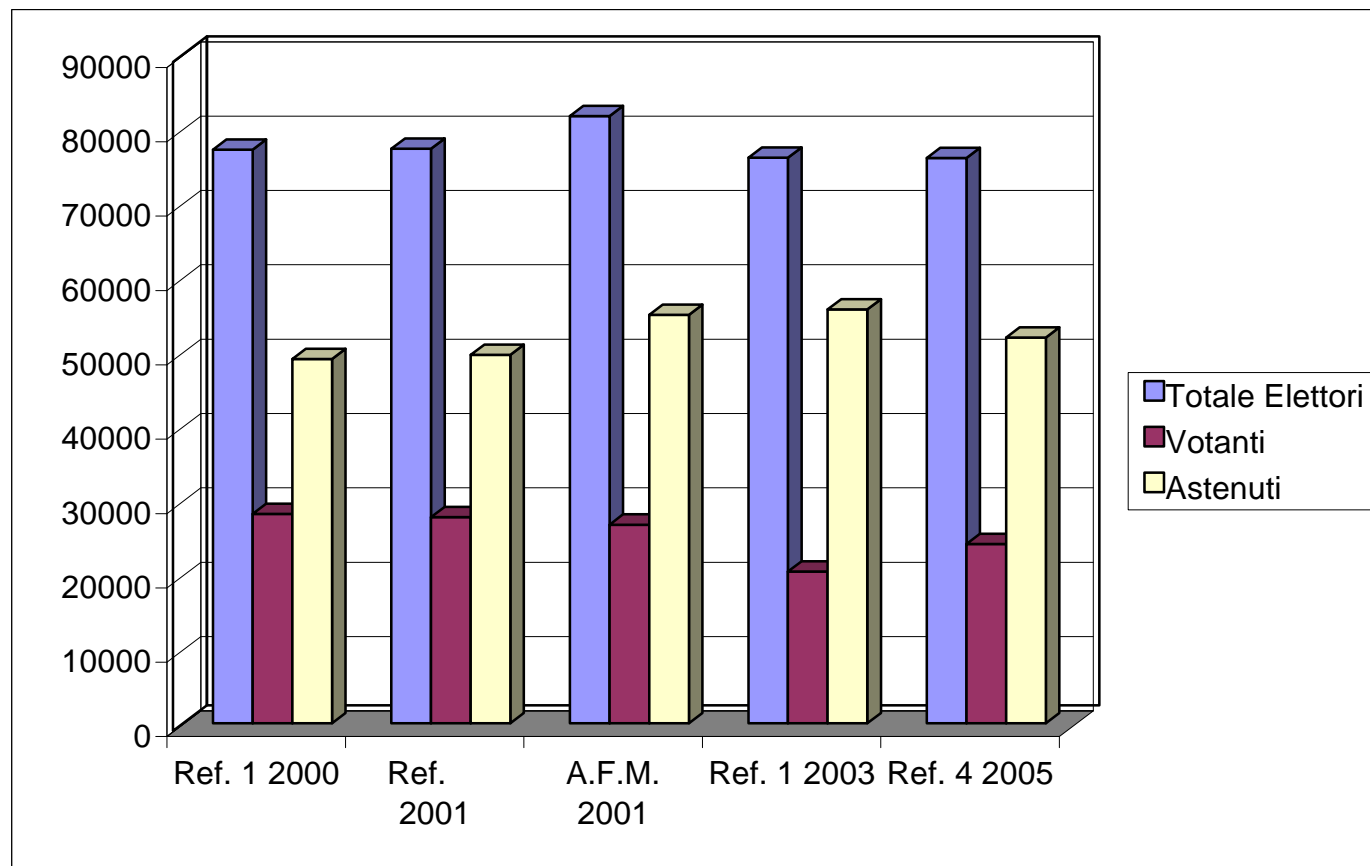
BIANCHE	679	NULLE	220	V. NULLE	1	CONTEST.	0
----------------	------------	--------------	------------	-----------------	----------	-----------------	----------

REFERENDUM POPOLARE DIVIETO DI FECONDAZIONE ETEROLOGA

SI	18880
NO	4353
BIANCHE	679
NULLE	220
V. NULLI	1
CONTEST.	0



REFERENDUM POPOLARE
DIVIETO DI FECONDAZIONE ETEROLOGA
TOTALE ELETTORI CHE HANNO DIRITTO AL VOTO, VOTANTI E ASTENUTI AI REFERENDUM DAL 1999 AL 2005



REFERENDUM POPOLARE
DIVIETO DI FECONDAZIONE ETEROLOGA - RISULTATO FINALE PER SEZIONE

Sez.	Elettori Iscritti			Votanti			Voti Validi			Voti Nulli			
	Maschi	Femmine	Totale	Maschi	Femmine	Totale	SI	NO	Nulle	Bianche	Contest.	V. Nulli	
1	407	480	887	147	161	308	242	56	3	7	0	0	
2	243	267	510	80	90	170	136	28	4	2	0	0	
3	132	166	298	41	44	85	68	15	0	2	0	0	
4	293	368	661	101	122	223	191	28	1	3	0	0	
5	297	350	647	68	86	154	127	24	1	2	0	0	
6	349	450	799	133	152	285	228	45	2	10	0	0	
7	288	351	639	118	115	233	177	47	4	5	0	0	
8	358	435	793	119	141	260	205	48	3	4	0	0	
9	392	527	919	130	131	261	208	48	0	5	0	0	
10	330	412	742	121	139	260	206	41	4	9	0	0	
11	463	530	993	176	193	369	287	69	0	13	0	0	
12	424	495	919	146	156	302	238	54	4	6	0	0	
13	336	458	794	111	141	252	183	59	2	8	0	0	
14	509	588	1097	173	203	376	309	54	4	9	0	0	
15	445	485	930	166	170	336	243	80	3	10	0	0	
16	262	302	564	86	96	182	135	41	2	4	0	0	
17	225	228	453	80	86	166	136	21	1	8	0	0	
18	498	581	1079	170	197	367	280	75	0	12	0	0	
19	479	538	1017	149	170	319	256	54	3	6	0	0	
20	305	371	676	108	112	220	169	41	4	6	0	0	
21	431	454	885	163	161	324	259	59	0	6	0	0	
22	290	390	680	74	99	173	131	35	0	7	0	0	
23	432	489	921	133	136	269	214	45	1	9	0	0	
24	410	462	872	142	150	292	224	56	2	10	0	0	
25	457	592	1049	154	202	356	272	69	2	13	0	0	
26	407	522	929	107	136	243	177	57	3	6	0	0	
27	348	367	715	125	106	231	183	41	2	5	0	0	
28	224	236	460	55	55	110	85	18	1	5	0	1	
29	465	560	1025	174	226	400	323	61	2	14	0	0	
30	410	394	804	119	122	241	177	57	1	6	0	0	
31	419	444	863	146	170	316	251	56	1	8	0	0	

Sez.	Elettori Iscritti			Votanti			Voti Validi		Voti Nulli			
	Maschi	Femmine	Totale	Maschi	Femmine	Totale	SI	NO	Nulle	Bianche	Contest.	V. Nulli
32	428	493	921	140	150	290	206	70	0	14	0	0
33	405	504	909	126	142	268	193	67	2	6	0	0
34	407	501	908	129	174	303	220	66	2	15	0	0
35	405	496	901	113	124	237	171	58	1	7	0	0
36	399	461	860	110	142	252	196	45	2	9	0	0
37	502	597	1099	159	177	336	263	58	4	11	0	0
38	502	610	1112	195	204	399	326	57	5	11	0	0
39	414	536	950	119	136	255	185	57	3	10	0	0
40	335	437	772	94	115	209	170	33	1	5	0	0
41	412	484	896	145	152	297	237	49	3	8	0	0
42	403	484	887	133	152	285	216	59	1	9	0	0
43	387	466	853	149	159	308	245	52	1	10	0	0
44	525	561	1086	168	173	341	259	73	3	6	0	0
45	449	519	968	129	132	261	210	40	2	9	0	0
46	418	477	895	138	165	303	240	50	2	11	0	0
47	457	522	979	148	176	324	258	56	4	6	0	0
48	450	449	899	181	159	340	275	56	1	8	0	0
49	452	499	951	191	190	381	297	72	3	9	0	0
50	375	403	778	123	131	254	201	50	2	1	0	0
51	426	445	871	118	115	233	191	38	2	2	0	0
52	402	435	837	142	158	300	246	40	4	10	0	0
53	441	467	908	122	132	254	205	40	5	4	0	0
54	646	625	1271	220	205	425	327	76	3	19	0	0
55	333	362	695	108	87	195	161	24	3	7	0	0
56	381	433	814	123	149	272	219	42	3	8	0	0
57	465	510	975	123	147	270	223	39	3	5	0	0
58	432	407	839	154	153	307	249	45	3	10	0	0
59	459	486	945	146	145	291	251	29	2	9	0	0
60	443	466	909	143	162	305	241	48	4	12	0	0
61	406	428	834	109	124	233	176	48	3	6	0	0
62	478	511	989	150	169	319	234	72	3	10	0	0
63	551	583	1134	145	180	325	246	60	7	12	0	0
64	313	317	630	95	85	180	136	39	1	4	0	0
65	243	239	482	62	51	113	87	22	1	3	0	0

Sez.	Elettori Iscritti			Votanti			Voti Validi		Voti Nulli			
	Maschi	Femmine	Totale	Maschi	Femmine	Totale	SI	NO	Nulle	Bianche	Contest.	V. Nulli
66	266	284	550	72	66	138	120	14	3	1	0	0
67	488	523	1011	164	187	351	273	67	2	9	0	0
68	380	390	770	105	111	216	179	33	1	3	0	0
69	461	496	957	158	181	339	276	52	1	10	0	0
70	383	364	747	131	139	270	219	39	10	2	0	0
71	609	640	1249	202	223	425	345	61	6	13	0	0
72	579	583	1162	164	190	354	286	52	3	13	0	0
73	544	571	1115	153	181	334	258	68	2	6	0	0
74	251	291	542	75	85	160	122	36	0	2	0	0
75	495	507	1002	159	176	335	248	72	3	12	0	0
76	501	508	1009	177	171	348	296	42	3	7	0	0
77	454	495	949	130	137	267	212	48	3	4	0	0
78	258	259	517	73	72	145	117	26	0	2	0	0
79	500	536	1036	144	134	278	188	69	8	13	0	0
80	547	590	1137	162	169	331	257	60	3	11	0	0
81	365	377	742	112	116	228	156	59	8	5	0	0
82	353	333	686	106	96	202	150	48	1	3	0	0
83	332	347	679	69	62	131	105	22	0	4	0	0
84	412	410	822	117	117	234	177	47	4	6	0	0
85	56	51	107	5	4	9	9	0	0	0	0	0
86	65	67	132	15	8	23	21	1	0	1	0	0
87	387	431	818	138	153	291	225	58	3	5	0	0
88	354	403	757	124	132	256	201	44	0	11	0	0
89	305	324	629	97	105	202	154	37	2	9	0	0
90	359	384	743	116	134	250	202	37	2	9	0	0
91	380	395	775	105	121	226	176	40	2	8	0	0
92	0	0	0	19	14	33	21	7	1	4	0	0
93	0	0	0	5	4	9	7	2	0	0	0	0
Totale	35956	40064	76020	11562	12571	24133	18880	4353	220	679	0	1
						31,75%	81,26%	18,74%				

REFERENDUM POPOLARE
DIVIETO DI FECONDAZIONE ETEROLOGA - % VOTANTI PER SEZIONE

Sez.	Elettori Iscritti			Votanti			% Votanti			% Astensionismo		
	Maschi	Femmine	Totale	Maschi	Femmine	Totale	Maschi	Femmine	Totale	Maschi	Femmine	Totale
1	407	480	887	147	161	308	36,12%	33,54%	34,72%	63,88%	66,46%	65,28%
2	243	267	510	80	90	170	32,92%	33,71%	33,33%	67,08%	66,29%	66,67%
3	132	166	298	41	44	85	31,06%	26,51%	28,52%	68,94%	73,49%	71,48%
4	293	368	661	101	122	223	34,47%	33,15%	33,74%	65,53%	66,85%	66,26%
5	297	350	647	68	86	154	22,90%	24,57%	23,80%	77,10%	75,43%	76,20%
6	349	450	799	133	152	285	38,11%	33,78%	35,67%	61,89%	66,22%	64,33%
7	288	351	639	118	115	233	40,97%	32,76%	36,46%	59,03%	67,24%	63,54%
8	358	435	793	119	141	260	33,24%	32,41%	32,79%	66,76%	67,59%	67,21%
9	392	527	919	130	131	261	33,16%	24,86%	28,40%	66,84%	75,14%	71,60%
10	330	412	742	121	139	260	36,67%	33,74%	35,04%	63,33%	66,26%	64,96%
11	463	530	993	176	193	369	38,01%	36,42%	37,16%	61,99%	63,58%	62,84%
12	424	495	919	146	156	302	34,43%	31,52%	32,86%	65,57%	68,48%	67,14%
13	336	458	794	111	141	252	33,04%	30,79%	31,74%	66,96%	69,21%	68,26%
14	509	588	1097	173	203	376	33,99%	34,52%	34,28%	66,01%	65,48%	65,72%
15	445	485	930	166	170	336	37,30%	35,05%	36,13%	62,70%	64,95%	63,87%
16	262	302	564	86	96	182	32,82%	31,79%	32,27%	67,18%	68,21%	67,73%
17	225	228	453	80	86	166	35,56%	37,72%	36,64%	64,44%	62,28%	63,36%
18	498	581	1079	170	197	367	34,14%	33,91%	34,01%	65,86%	66,09%	65,99%
19	479	538	1017	149	170	319	31,11%	31,60%	31,37%	68,89%	68,40%	68,63%
20	305	371	676	108	112	220	35,41%	30,19%	32,54%	64,59%	69,81%	67,46%
21	431	454	885	163	161	324	37,82%	35,46%	36,61%	62,18%	64,54%	63,39%
22	290	390	680	74	99	173	25,52%	25,38%	25,44%	74,48%	74,62%	74,56%
23	432	489	921	133	136	269	30,79%	27,81%	29,21%	69,21%	72,19%	70,79%
24	410	462	872	142	150	292	34,63%	32,47%	33,49%	65,37%	67,53%	66,51%
25	457	592	1049	154	202	356	33,70%	34,12%	33,94%	66,30%	65,88%	66,06%
26	407	522	929	107	136	243	26,29%	26,05%	26,16%	73,71%	73,95%	73,84%
27	348	367	715	125	106	231	35,92%	28,88%	32,31%	64,08%	71,12%	67,69%
28	224	236	460	55	55	110	24,55%	23,31%	23,91%	75,45%	76,69%	76,09%
29	465	560	1025	174	226	400	37,42%	40,36%	39,02%	62,58%	59,64%	60,98%
30	410	394	804	119	122	241	29,02%	30,96%	29,98%	70,98%	69,04%	70,02%
31	419	444	863	146	170	316	34,84%	38,29%	36,62%	65,16%	61,71%	63,38%

Sez.	Elettori Iscritti			Votanti			% Votanti			% Astensionismo		
	Maschi	Femmine	Totale	Maschi	Femmine	Totale	Maschi	Femmine	Totale	Maschi	Femmine	Totale
32	428	493	921	140	150	290	32,71%	30,43%	31,49%	67,29%	69,57%	68,51%
33	405	504	909	126	142	268	31,11%	28,17%	29,48%	68,89%	71,83%	70,52%
34	407	501	908	129	174	303	31,70%	34,73%	33,37%	68,30%	65,27%	66,63%
35	405	496	901	113	124	237	27,90%	25,00%	26,30%	72,10%	75,00%	73,70%
36	399	461	860	110	142	252	27,57%	30,80%	29,30%	72,43%	69,20%	70,70%
37	502	597	1099	159	177	336	31,67%	29,65%	30,57%	68,33%	70,35%	69,43%
38	502	610	1112	195	204	399	38,84%	33,44%	35,88%	61,16%	66,56%	64,12%
39	414	536	950	119	136	255	28,74%	25,37%	26,84%	71,26%	74,63%	73,16%
40	335	437	772	94	115	209	28,06%	26,32%	27,07%	71,94%	73,68%	72,93%
41	412	484	896	145	152	297	35,19%	31,40%	33,15%	64,81%	68,60%	66,85%
42	403	484	887	133	152	285	33,00%	31,40%	32,13%	67,00%	68,60%	67,87%
43	387	466	853	149	159	308	38,50%	34,12%	36,11%	61,50%	65,88%	63,89%
44	525	561	1086	168	173	341	32,00%	30,84%	31,40%	68,00%	69,16%	68,60%
45	449	519	968	129	132	261	28,73%	25,43%	26,96%	71,27%	74,57%	73,04%
46	418	477	895	138	165	303	33,01%	34,59%	33,85%	66,99%	65,41%	66,15%
47	457	522	979	148	176	324	32,39%	33,72%	33,09%	67,61%	66,28%	66,91%
48	450	449	899	181	159	340	40,22%	35,41%	37,82%	59,78%	64,59%	62,18%
49	452	499	951	191	190	381	42,26%	38,08%	40,06%	57,74%	61,92%	59,94%
50	375	403	778	123	131	254	32,80%	32,51%	32,65%	67,20%	67,49%	67,35%
51	426	445	871	118	115	233	27,70%	25,84%	26,75%	72,30%	74,16%	73,25%
52	402	435	837	142	158	300	35,32%	36,32%	35,84%	64,68%	63,68%	64,16%
53	441	467	908	122	132	254	27,66%	28,27%	27,97%	72,34%	71,73%	72,03%
54	646	625	1271	220	205	425	34,06%	32,80%	33,44%	65,94%	67,20%	66,56%
55	333	362	695	108	87	195	32,43%	24,03%	28,06%	67,57%	75,97%	71,94%
56	381	433	814	123	149	272	32,28%	34,41%	33,42%	67,72%	65,59%	66,58%
57	465	510	975	123	147	270	26,45%	28,82%	27,69%	73,55%	71,18%	72,31%
58	432	407	839	154	153	307	35,65%	37,59%	36,59%	64,35%	62,41%	63,41%
59	459	486	945	146	145	291	31,81%	29,84%	30,79%	68,19%	70,16%	69,21%
60	443	466	909	143	162	305	32,28%	34,76%	33,55%	67,72%	65,24%	66,45%
61	406	428	834	109	124	233	26,85%	28,97%	27,94%	73,15%	71,03%	72,06%
62	478	511	989	150	169	319	31,38%	33,07%	32,25%	68,62%	66,93%	67,75%
63	551	583	1134	145	180	325	26,32%	30,87%	28,66%	73,68%	69,13%	71,34%
64	313	317	630	95	85	180	30,35%	26,81%	28,57%	69,65%	73,19%	71,43%
65	243	239	482	62	51	113	25,51%	21,34%	23,44%	74,49%	78,66%	76,56%

Sez.	Elettori Iscritti			Votanti			% Votanti			% Astensionismo		
	Maschi	Femmine	Totale	Maschi	Femmine	Totale	Maschi	Femmine	Totale	Maschi	Femmine	Totale
66	266	284	550	72	66	138	27,07%	23,24%	25,09%	72,93%	76,76%	74,91%
67	488	523	1011	164	187	351	33,61%	35,76%	34,72%	66,39%	64,24%	65,28%
68	380	390	770	105	111	216	27,63%	28,46%	28,05%	72,37%	71,54%	71,95%
69	461	496	957	158	181	339	34,27%	36,49%	35,42%	65,73%	63,51%	64,58%
70	383	364	747	131	139	270	34,20%	38,19%	36,14%	65,80%	61,81%	63,86%
71	609	640	1249	202	223	425	33,17%	34,84%	34,03%	66,83%	65,16%	65,97%
72	579	583	1162	164	190	354	28,32%	32,59%	30,46%	71,68%	67,41%	69,54%
73	544	571	1115	153	181	334	28,13%	31,70%	29,96%	71,88%	68,30%	70,04%
74	251	291	542	75	85	160	29,88%	29,21%	29,52%	70,12%	70,79%	70,48%
75	495	507	1002	159	176	335	32,12%	34,71%	33,43%	67,88%	65,29%	66,57%
76	501	508	1009	177	171	348	35,33%	33,66%	34,49%	64,67%	66,34%	65,51%
77	454	495	949	130	137	267	28,63%	27,68%	28,13%	71,37%	72,32%	71,87%
78	258	259	517	73	72	145	28,29%	27,80%	28,05%	71,71%	72,20%	71,95%
79	500	536	1036	144	134	278	28,80%	25,00%	26,83%	71,20%	75,00%	73,17%
80	547	590	1137	162	169	331	29,62%	28,64%	29,11%	70,38%	71,36%	70,89%
81	365	377	742	112	116	228	30,68%	30,77%	30,73%	69,32%	69,23%	69,27%
82	353	333	686	106	96	202	30,03%	28,83%	29,45%	69,97%	71,17%	70,55%
83	332	347	679	69	62	131	20,78%	17,87%	19,29%	79,22%	82,13%	80,71%
84	412	410	822	117	117	234	28,40%	28,54%	28,47%	71,60%	71,46%	71,53%
85	56	51	107	5	4	9	8,93%	7,84%	8,41%	91,07%	92,16%	91,59%
86	65	67	132	15	8	23	23,08%	11,94%	17,42%	76,92%	88,06%	82,58%
87	387	431	818	138	153	291	35,66%	35,50%	35,57%	64,34%	64,50%	64,43%
88	354	403	757	124	132	256	35,03%	32,75%	33,82%	64,97%	67,25%	66,18%
89	305	324	629	97	105	202	31,80%	32,41%	32,11%	68,20%	67,59%	67,89%
90	359	384	743	116	134	250	32,31%	34,90%	33,65%	67,69%	65,10%	66,35%
91	380	395	775	105	121	226	27,63%	30,63%	29,16%	72,37%	69,37%	70,84%
92	0	0	0	19	14	33						
93	0	0	0	5	4	9						
Totale	35956	40064	76020	11562	12571	24133	32,16%	31,38%	31,75%	67,84%	68,62%	68,25%